

Quiz

2/19/2026

Airspace

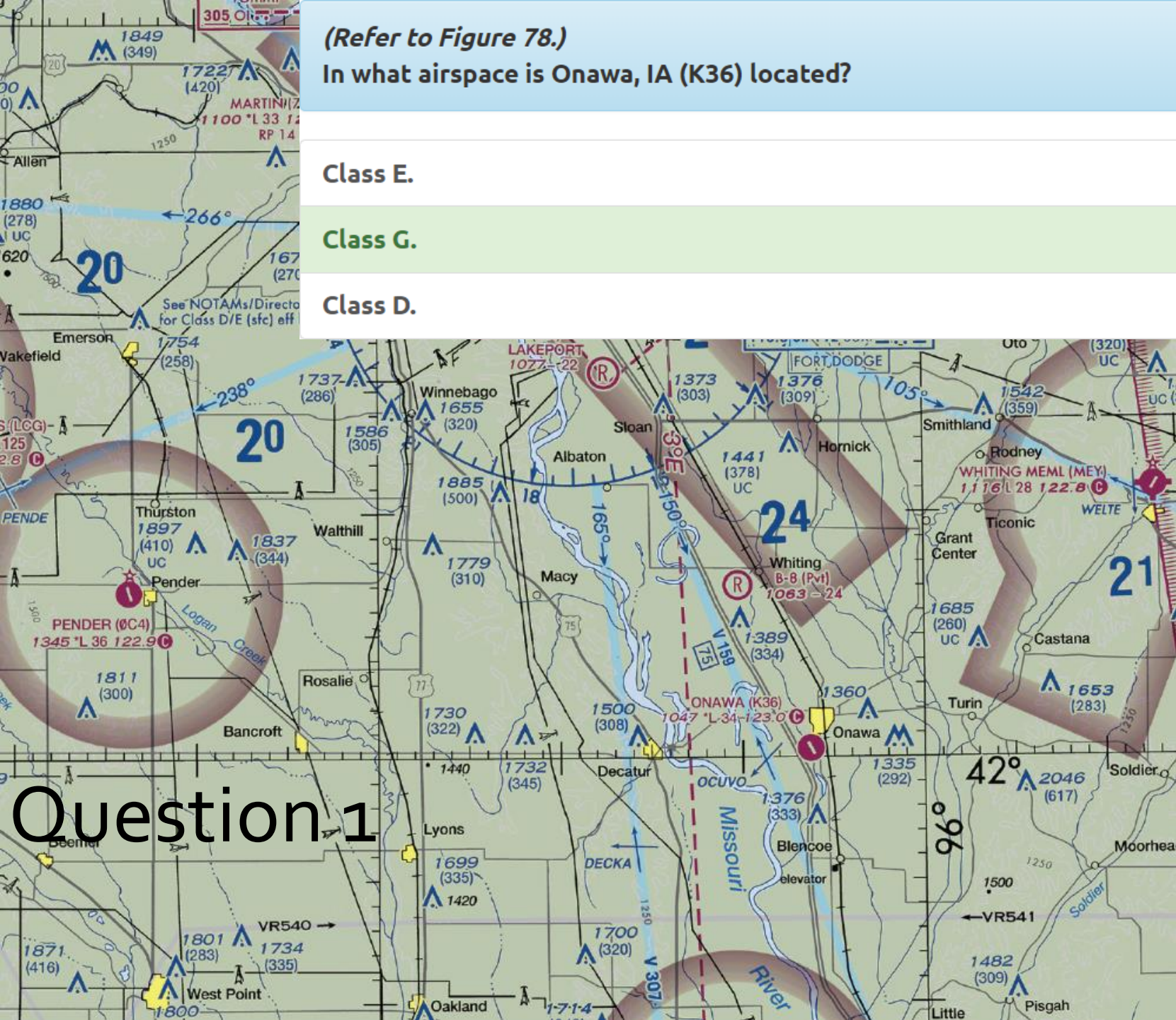
(Refer to Figure 78.)

In what airspace is Onawa, IA (K36) located?

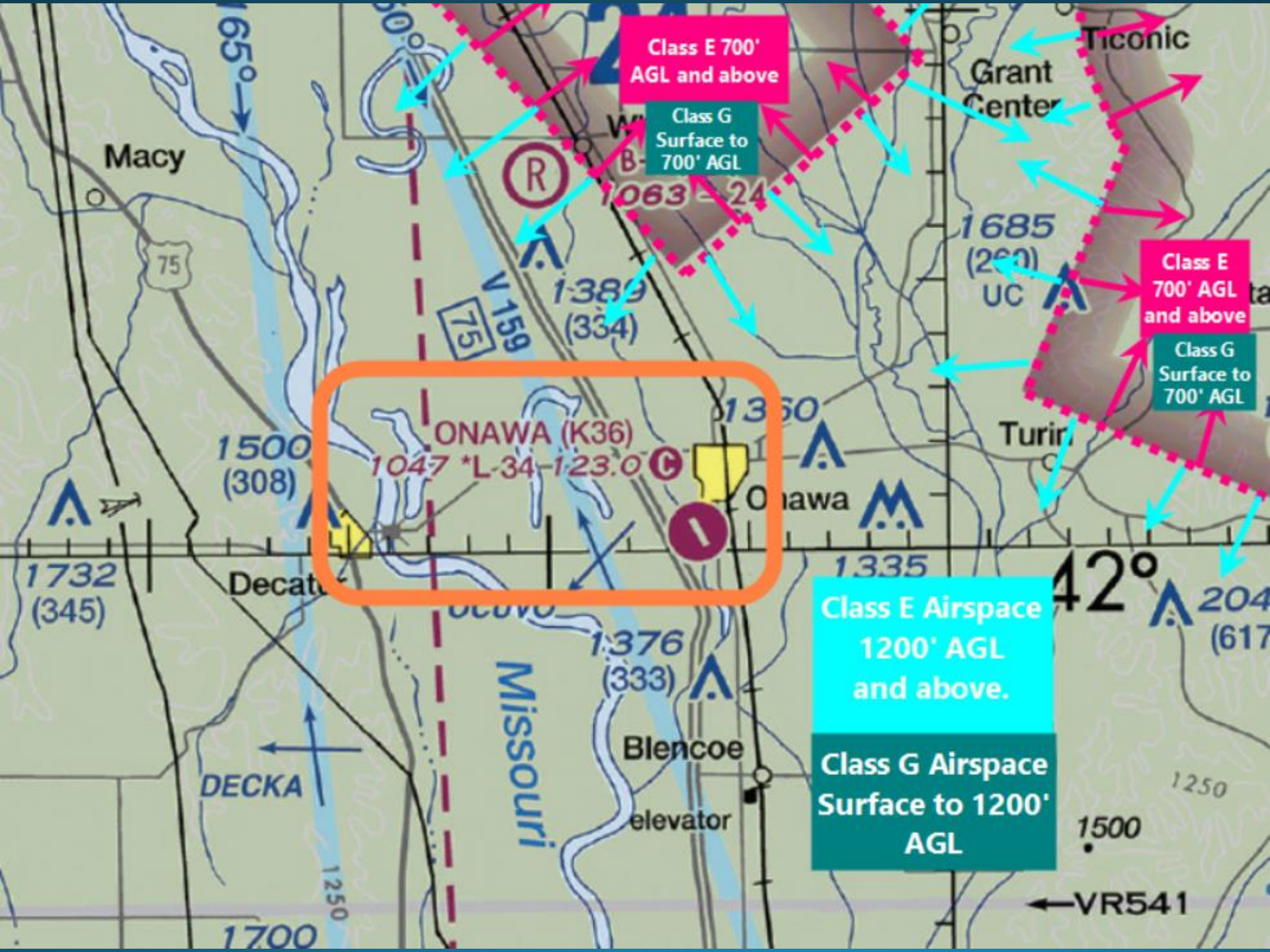
Class E.

Class G.

Class D.



Question 1



Class E 700' AGL and above

Class G Surface to 700' AGL

Class E 700' AGL and above

Class G Surface to 700' AGL

ONAWA (K36)
1047 *L-34-123.0

Class E Airspace
1200' AGL
and above.

Class G Airspace
Surface to 1200'
AGL

Question 2

Which initial action should a pilot take prior to entering Class C airspace?



Contact the FSS for traffic advisories.

Contact approach control on the appropriate frequency.

Contact the tower and request permission to enter.

Question 2

	Class Airspace	Entry Requirements	Aircraft Equipment	Minimum Pilot Certificate
Controlled Airspace	A	ATC Clearance	IFR Equipped ADS-B	Instrument Rating
	B		ADS-B Two-way radio, transponder with altitude encoding capability	Private Pilot. However, a student or recreational pilot may operate at other than the primary airport if seeking private pilot certification and if regulatory requirements are met.
	C	Two-way radio communications prior to entry	Two-way radio * ADS-B	No Specific Requirement
	D			
	E	None for VFR	* ADS-B	
Uncontrolled	G	None	No Specific Requirement	

* ADS-B is required on most aircraft with electrical systems operating in most Class A and B and C airspace and some but not all Class D, E, and G airspace. The ADS-B requirements don't map exactly to the standard airspace grid and are likely to be modified over time. Please see the ADS-B section below (when available) or elsewhere in this learning application to learn more about it.

Question 3

With certain exceptions, Class E airspace extends upward from either 700 feet or 1,200 feet AGL to, but does not include,

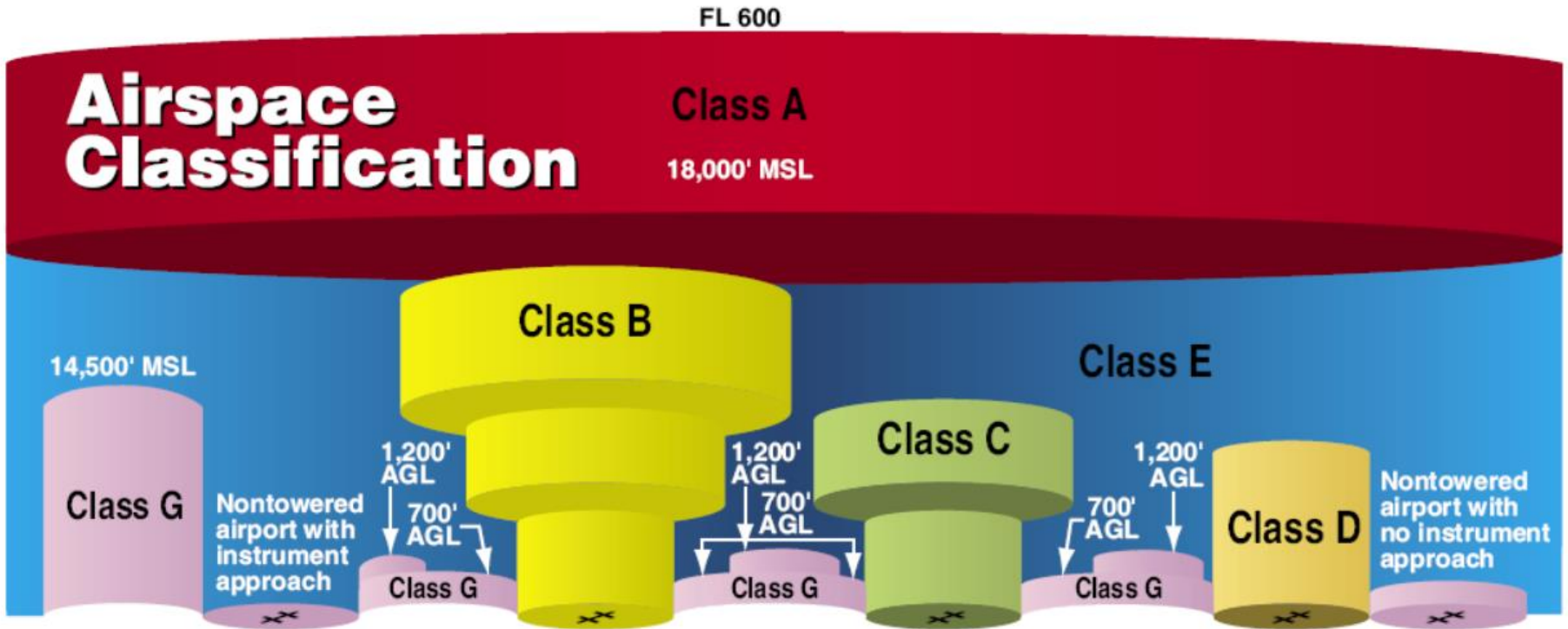


10,000 feet MSL.

15,000 feet MSL.

18,000 feet MSL.

Question 3



CLASS E (Controlled) AIRSPACE

Class E airspace is **controlled airspace**. The limits of class E Airspace are depicted on VFR terminal and sectional charts but not on Wide Area Charts (WACs). Generally speaking, the cloud clearance and visibility requirements for operations in Class E airspace are greater than those for Class G (uncontrolled) airspace.

Unless otherwise specified, Class E airspace generally extends to 17,999' MSL over much of the USA.

Question 4

VFR flight in controlled airspace above 1,200 feet AGL and below 10,000 feet MSL requires a minimum visibility and vertical cloud clearance of



5 miles, and 1,000 feet below or 1,000 feet above the clouds only in Class A airspace.

5 miles, and 1,000 feet below or 1,000 feet above the clouds at all altitudes.

3 miles, and 500 feet below or 1,000 feet above the clouds in controlled airspace.

Question 4

		Airspace	Flight Visibility	Distance from Clouds	Mnemonic	
Controlled Airspace	A		Not Applicable	Not Applicable	N/A	
	B		3 Statute Miles	Clear of Clouds	3 and Clear	
	C		3 Statute Miles	1,000 feet above 500 feet below 2,000 feet horizontal	3-152	
	D		3 Statute Miles	1,000 feet above 500 feet below 2,000 feet horizontal	3-152	
	E	At or Above 10,000' MSL	5 Statute Miles	1,000 feet above 1,000 feet below 1 statute mile horizontal	5-111	
Less than 10,000' MSL		3 Statute Miles	1,000 feet above 500 feet below 2,000 feet horizontal	3-152		
Uncontrolled	G	More than 1,200' above the surface and at or above 10,000' MSL, day or night		5 Statute Miles	1,000 feet above 1,000 feet below 1 statute mile horizontal	5-111
		More than 1,200' above the surface but less than 10,000' MSL	Day	1 Statute Mile	1,000 feet above 500 feet below 2,000 feet horizontal	1-152
			Night	3 Statute Miles	1,000 feet above 500 feet below 2,000 feet horizontal	3-152
	1,200' or less above the surface (regardless of MSL altitude)	Day *	1 Statute Mile	Clear of Clouds	1 and Clear	
		Night *	3 Statute Miles	1,000 feet above 500 feet below 2,000 feet horizontal	3-152	

(Refer to figure 70, point 5)

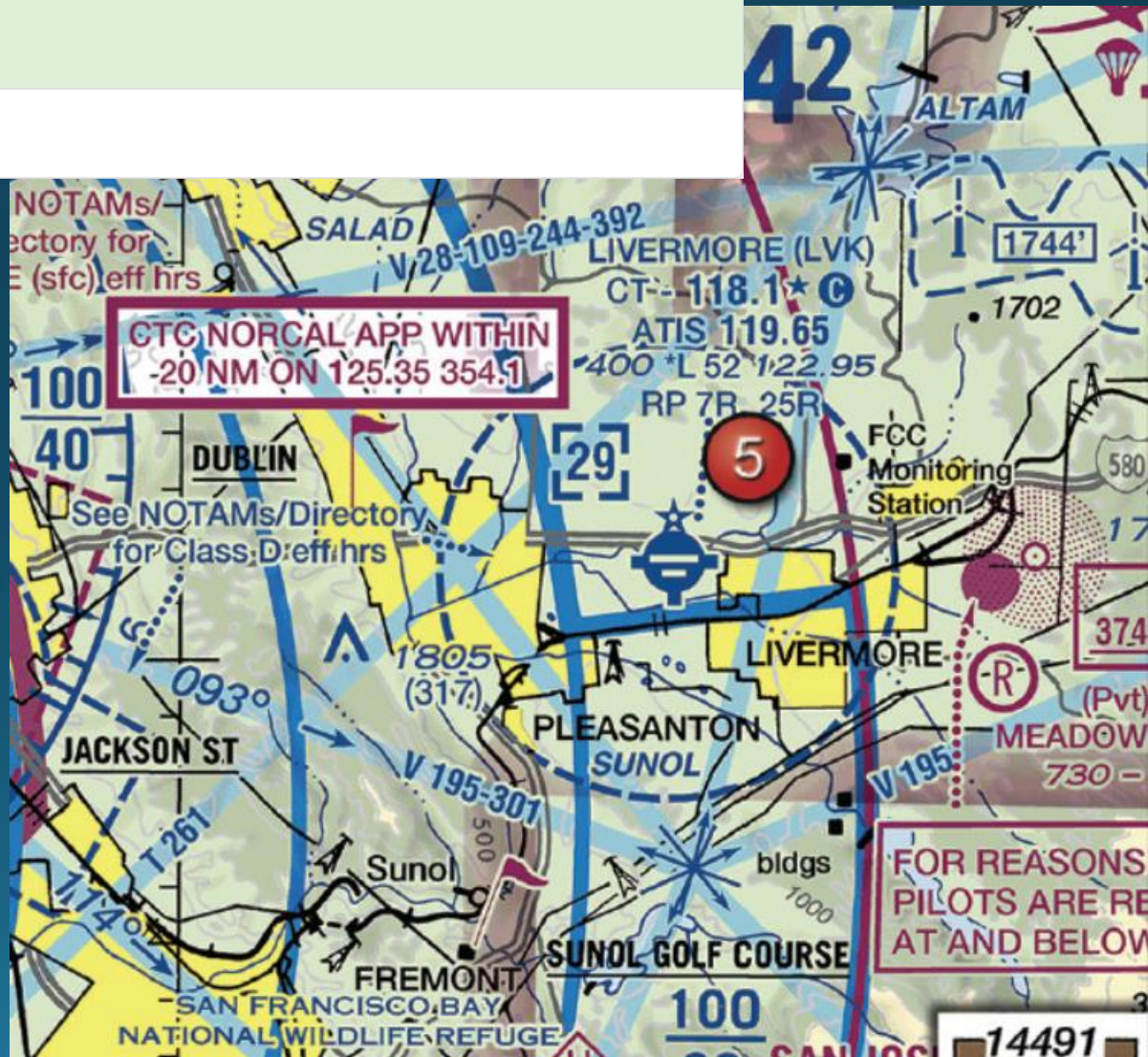


What minimum altitude is required to avoid the Livermore Airport (LVK) Class D airspace?

2,503 feet MSL.

2,901 feet MSL.

3,297 feet MSL.



Question 5

**The top of the
Livermore Class
D airspace is
2900 feet MSL.**

**Livermore Airport
Class D Airspace**

