

# Aviation Charts



**WASHINGTON SECTIONAL**  
SECTIONAL AERONAUTICAL CHART SCALE 1:500,000



Federal Aviation  
Administration

TM

**105<sup>TH</sup> EDITION EFFECTIVE 0901Z 31 JAN 2019**  
**TO 0901Z 18 JUL 2019**

Includes airspace amendments effective **3 JAN 2019**  
and all other aeronautical data received by **6 DEC 2018**

Information on this chart will change; consolidated major updates of chart changes are available every 56 days in the CHART SUPPLEMENT Aeronautical Chart Bulletin section (online at <http://faa.gov/go/ais>). Also consult appropriate NOTICES TO AIRMEN (NOTAMs) and other FLIGHT INFORMATION PUBLICATIONS (FLIPs) for the latest changes. Consult/Subscribe to FAA Safety Alerts and Charting Notices at: [http://www.faa.gov/air\\_traffic/flight\\_info/aeronav/safety\\_alerts/](http://www.faa.gov/air_traffic/flight_info/aeronav/safety_alerts/)



Published from digital files compiled in accordance with Interagency Air Committee specifications and agreements approved by Department of Defense - Federal Aviation Administration.

Warning: Refer to current foreign charts and flight information publications for information within foreign airspace.

# Sectional Chart

# BALTIMORE-WASHINGTON TAC

VFR TERMINAL AREA CHART SCALE 1:250,000



Federal Aviation  
Administration

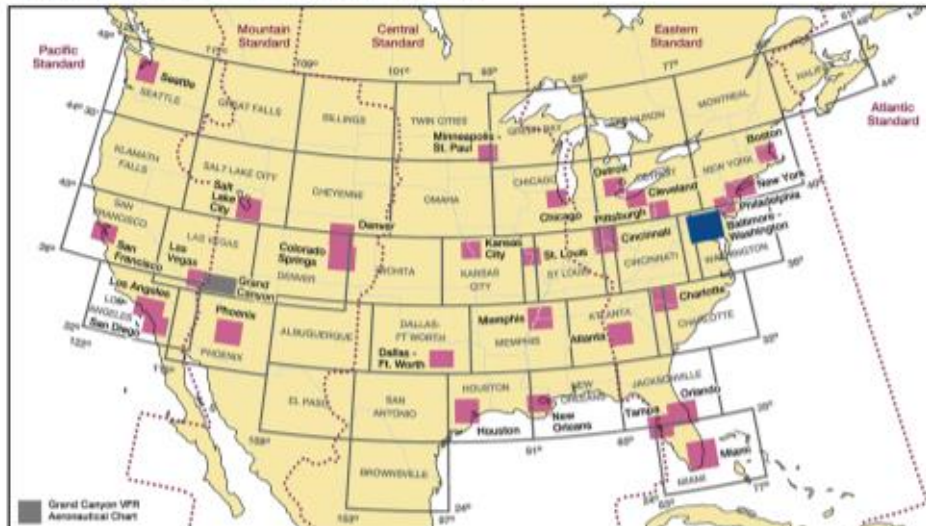
TM

# Terminal Area Chart (TAC)

98<sup>TH</sup> EDITION EFFECTIVE 0901Z **31 JAN 2019**  
TO 0901Z **18 JUL 2019**

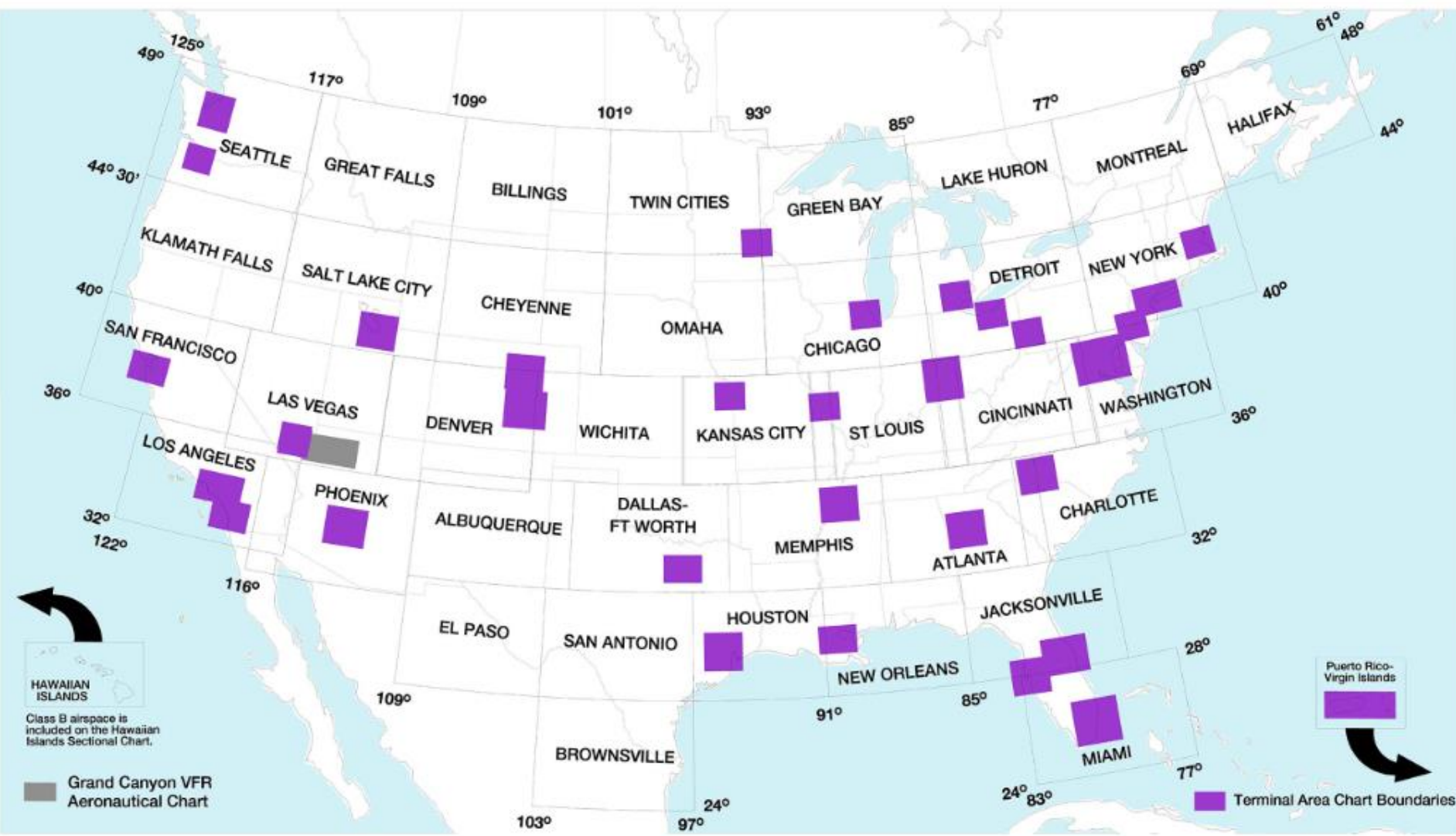
Includes airspace amendments effective **3 JAN 2019**  
and all other aeronautical data received by **6 DEC 2018**

Information on this chart will change, consolidated major updates of chart changes are available every 56 days in the CHART SUPPLEMENT Aeronautical Chart Bulletin section (online at <http://faa.gov/go/ais>). Also consult appropriate NOTICES TO AIRMEN (NOTAMS) and other FLIGHT INFORMATION PUBLICATIONS (FLIPs) for the latest changes. Consult/Subscribe to FAA Safety Alerts and Charting Notices at: [http://www.faa.gov/air\\_traffic/flight\\_info/aeronav/safety\\_alerts/](http://www.faa.gov/air_traffic/flight_info/aeronav/safety_alerts/)



Published from digital files compiled in accordance with Interagency Air Committee specifications and agreements approved by Department of Defense - Federal Aviation Administration.

Warning: Refer to current foreign charts and flight information publications for information within foreign airspace.

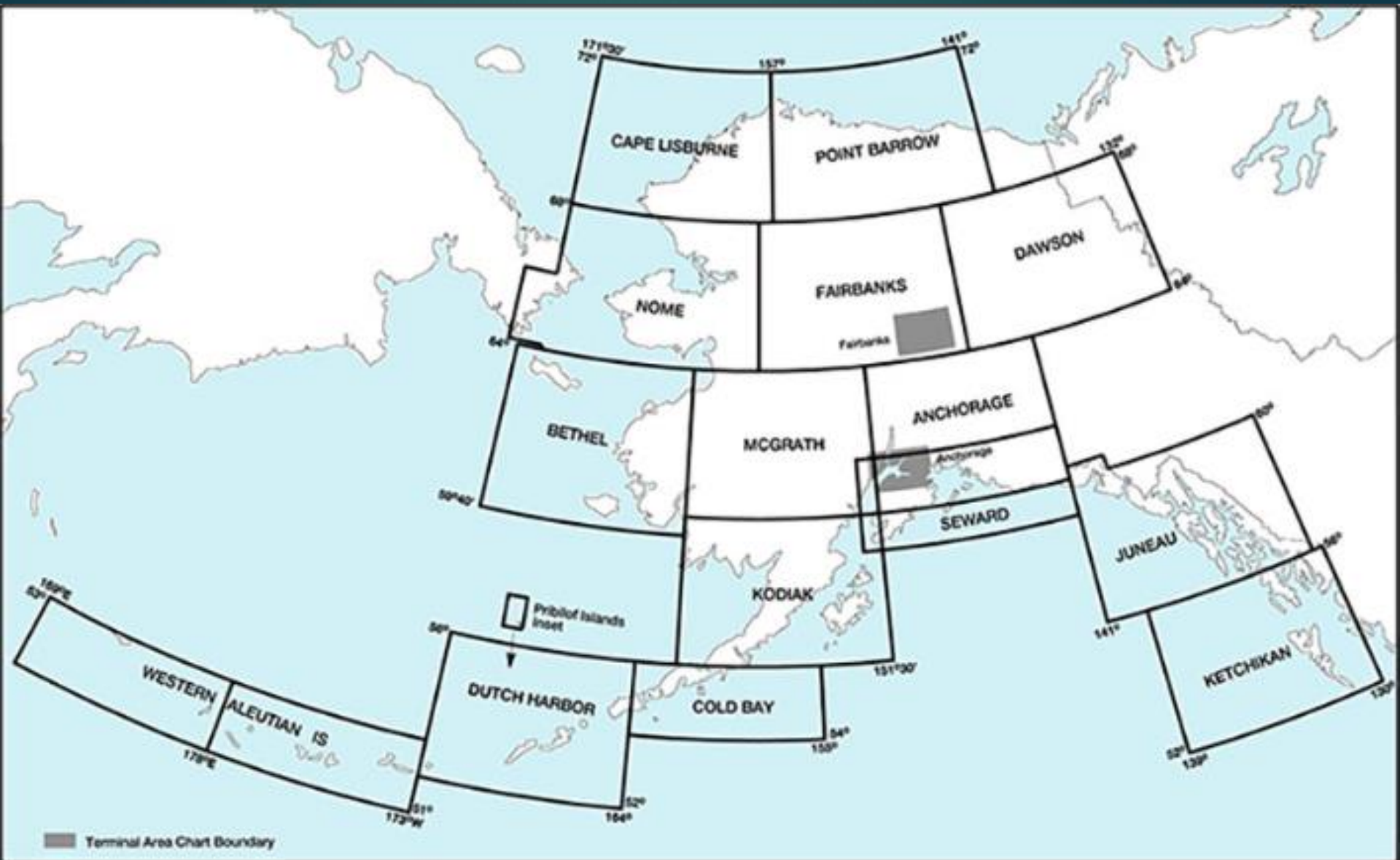


HAWAIIAN ISLANDS  
Class B airspace is included on the Hawaiian Islands Sectional Chart.

Grand Canyon VFR Aeronautical Chart

Puerto Rico-Virgin Islands

Terminal Area Chart Boundaries





## Aeronautical Information Services

Alerts/Notices

NOTAMs

Catalog of Products

Planning Charts

VFR Charts

Sectional

Terminal Area

Gulf Coast

Grand Canyon

Helicopter

Caribbean

IFR Charts

Supplemental Charts/Pubs

Dates of Latest Editions

Digital Products

Order FAA Products

Aeronautical Data

Obstruction Evaluation

Obstacle Data

Critical DME List

Instrument Flight Procedures Information Gateway

Aeronautical Charting Meeting

FAA Home > Air Traffic > Flight Information > Aeronautical Information Services > Catalog of Products > VFR Charts > Sectional

# Sectional Aeronautical Chart

**Sectional Aeronautical Charts** are the primary navigational reference medium used by the VFR pilot community. The 1:500,000 scale Sectional Aeronautical Chart Series is designed for visual navigation of slow to medium speed aircraft. The topographic information featured consists of the relief and a judicious selection of visual checkpoints used for flight under visual flight rules. The checkpoints include populated places, drainage patterns, roads, railroads, and other distinctive landmarks. The aeronautical information on Sectional Charts includes visual and radio aids to navigation, airports, controlled airspace, restricted areas, obstructions, and related data. These charts are updated every six months, most Alaska Charts annually.



Separate indices show the coverage of VFR Charts (Conterminous U.S. and Alaska).

### Product Name and FAA Product ID

Chart Type	Nautical miles/inch	Nautical miles/cm	Scale
Sectional Aeronautical Charts	6.86	2.70	1:500,000

## Top Tasks

View Alerts/Notices

Search NOTAMs

Order FAA Products

Find Digital Products

Review Aeronautical Data

Search for Instrument Flight Procedures

Explore the Data Innovation Center, your central location for all FAA aeronautical data.

## Contact Us

Aeronautical Inquiries



# Terminal Area Chart



## Terminal Area Charts (TACs)

provide a large-scale portrayal of selected metropolitan complexes to satisfy pilotage and local control requirements. The 1:250,000 scale VFR Terminal Area Chart (TAC) Series depict the airspace designated as Class B Airspace. The information found on these charts portrays much more detail than is found on the Sectional Charts because of the larger scale.

These charts are intended for use by pilots operating from airfields within or near Class B and Class C airspace. Coverage of Terminal Area Charts are indicated by shaded boxes on the Sectional Chart index. These charts are updated every 56 days.

**Charted VFR Flyway Planning Charts** are printed on the backs of selected Terminal Area Charts.

Separate indices show the coverage of VFR Charts (Conterminous U.S. and Alaska).



## Top Tasks

- [View Alerts/Notices](#)
- [Search NOTAMs](#)
- [Order FAA Products](#)
- [Find Digital Products](#)
- [Review Aeronautical Data](#)
- [Search for Instrument Flight Procedures](#)

Explore the Data Innovation Center, your central location for all FAA aeronautical data.

## Contact Us

- [Aeronautical Inquiries](#)
- [Report Obstacle Light Outage](#)

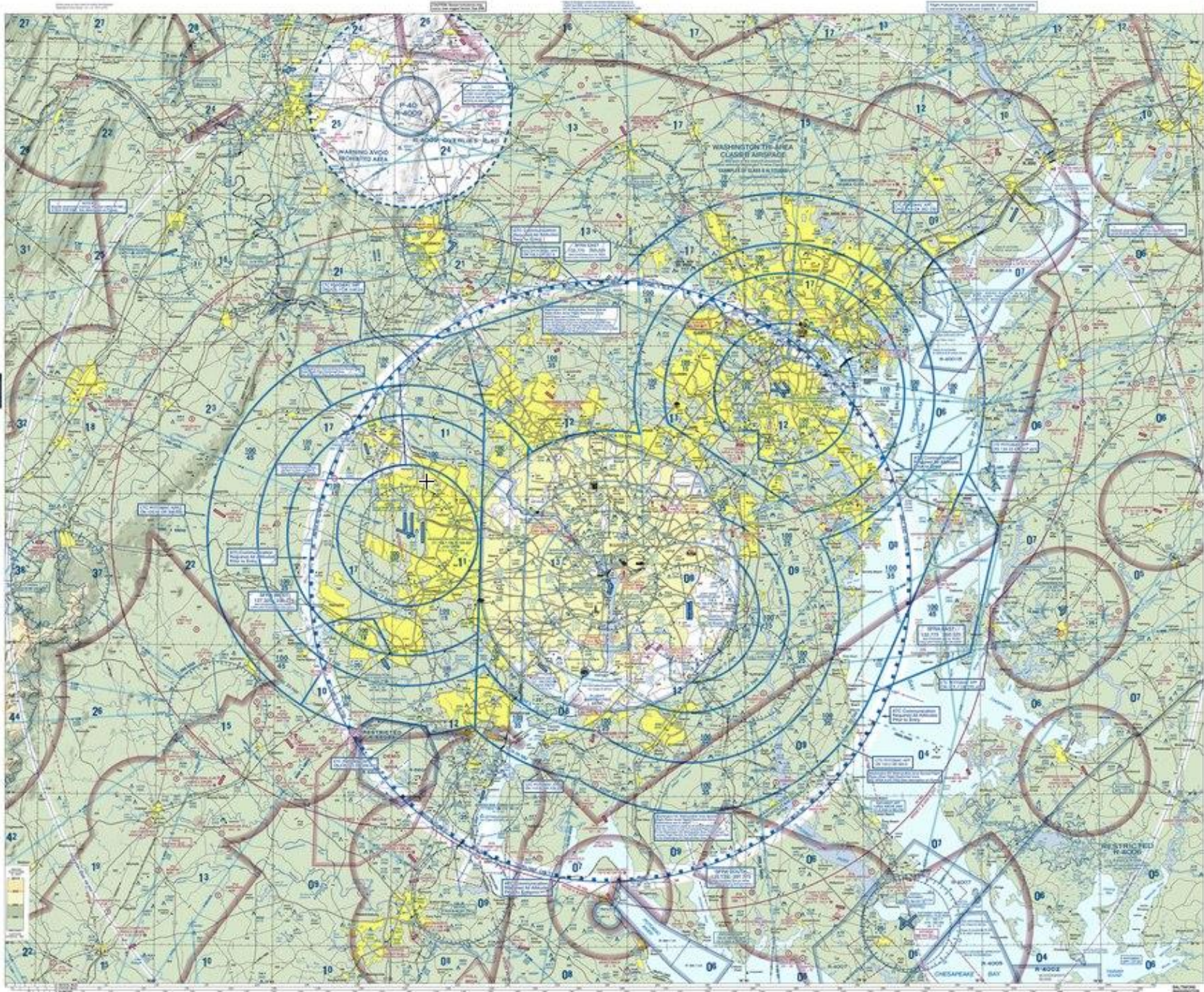
4th TERMINAL AREA CHART  
BALTIMORE - WASHINGTON

**SYMBOLS**

- Class of airspace
- Obstructions
- Communication facilities
- Communication frequencies
- Communication procedures
- Communication equipment
- Communication services
- Communication restrictions
- Communication requirements
- Communication restrictions
- Communication requirements

**NOTES**

- 1. This chart is published under the authority of the Department of Defense, Office of the Chief of Naval Operations, and the Department of Transportation, Federal Aviation Administration.
- 2. This chart is published under the authority of the Department of Defense, Office of the Chief of Naval Operations, and the Department of Transportation, Federal Aviation Administration.
- 3. This chart is published under the authority of the Department of Defense, Office of the Chief of Naval Operations, and the Department of Transportation, Federal Aviation Administration.



BALTIMORE-WASHINGTON TAC



EFFECTIVE DATE: 29 DEC 2022  
ISSUE NO.: 23 FEB 2023



FAA Product ID: 7000  
NOV 2023 150730  
UNCLASSIFIED

**COMMUNICATION FACILITIES**

Facility	Frequency	Power	Notes
ATIS	118.1	100W	1200-1800Z
Unicom	122.1	100W	24/7
Tower	119.1	100W	0600-1800Z
Enroute	133.0	100W	0600-1800Z

**NOTES**

- 1. This chart is published under the authority of the Department of Defense, Office of the Chief of Naval Operations, and the Department of Transportation, Federal Aviation Administration.
- 2. This chart is published under the authority of the Department of Defense, Office of the Chief of Naval Operations, and the Department of Transportation, Federal Aviation Administration.
- 3. This chart is published under the authority of the Department of Defense, Office of the Chief of Naval Operations, and the Department of Transportation, Federal Aviation Administration.

**VFR FLYWAY PLANNING CHART  
BALTIMORE - WASHINGTON**

**NOT TO BE USED FOR NAVIGATION**

**AIRPORTS**

AIRPORT CLASS  
 CLASS E (SOLID CIRCLE)  
 CLASS G (DASHED CIRCLE)  
 CLASS D (SOLID SQUARE)  
 CLASS C (SOLID DIAMOND)  
 CLASS B (SOLID TRIANGLE)

**AVOID AREAS TO WHICH**

OBSTRUCTION CLEARANCE SURFACE  
 OBSTACLE LIMITATION SURFACE  
 OBSTACLE PROTECTION SURFACE

**REPORT TRAFFIC SERVICE AND AIRSPACE INFORMATION**

TRAFFIC SERVICE (T)  
 RESTRICTED AREA (R)  
 PROHIBITED AREA (P)

**RESTRICTIONS**

RESTRICTED AREA (R)  
 PROHIBITED AREA (P)  
 DANGER AREA (D)

**TOPOGRAPHIC INFORMATION**

SPOT ELEVATION (triangle)  
 MEAN SEA LEVEL (MSL) (circle with M)  
 ABOVE GROUND LEVEL (AGL) (circle with A)

**CAUTION**

THIS CHART IS NOT TO BE USED FOR NAVIGATION. IT IS A PLANNING CHART ONLY. IT DOES NOT SHOW THE LATEST CHANGES TO AIRSPACE. ALWAYS CHECK THE NOTAMS AND AIRMEN FOR THE LATEST INFORMATION.

CLASS	DESCRIPTION	HEIGHT	STATUS
Class E	Class E Airspace	1000	Active
Class G	Class G Airspace	1000	Active
Class D	Class D Airspace	1000	Active
Class C	Class C Airspace	1000	Active
Class B	Class B Airspace	1000	Active

**NOTES**

1. This chart is not to be used for navigation. It is a planning chart only. It does not show the latest changes to airspace. Always check the NOTAMS and AIRMEN for the latest information.

2. The chart is based on the latest available information. It is subject to change without notice.

3. The chart is not a substitute for a current flight manual or other official publications.

**REVISIONS**

1. 1/15/12

2. 1/15/12

3. 1/15/12

4. 1/15/12

5. 1/15/12

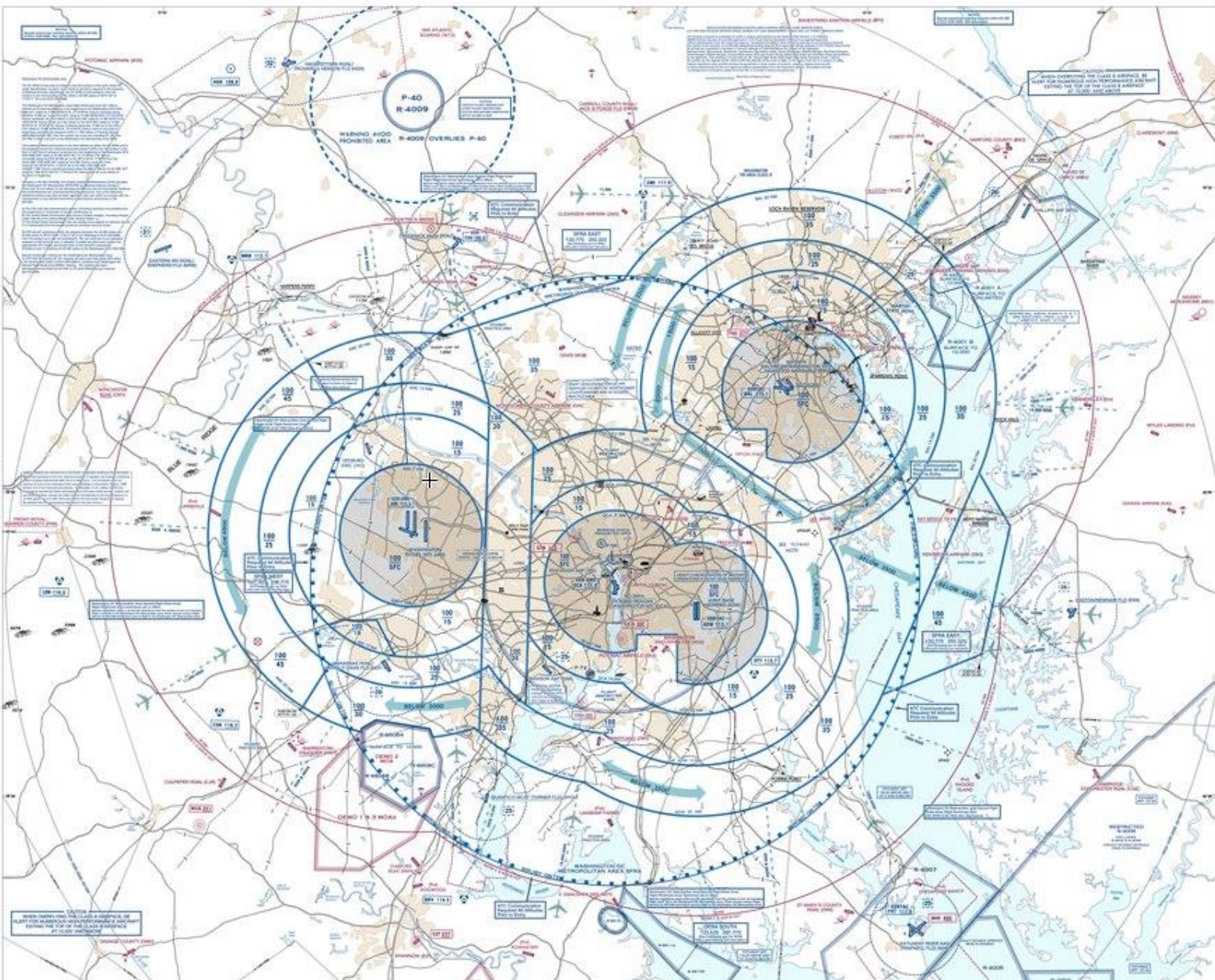
6. 1/15/12

7. 1/15/12

8. 1/15/12

9. 1/15/12

10. 1/15/12



# Supplemental Charts and Products



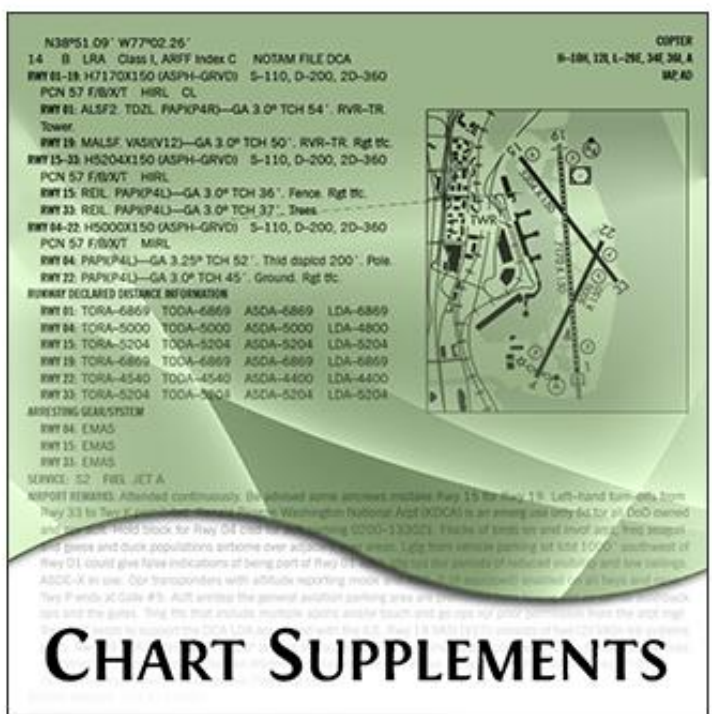
## CHART SUPPLEMENT

- A series of civil/military flight information publications issued by FAA every 56 days consisting of the Chart Supplement U.S., Chart Supplement Alaska, and Chart Supplement Pacific.

## Chart Supplement U.S.

This 7-volume book series is designed for use with appropriate IFR

or VFR charts and contains data including, but not limited to, airports, NAVAIDs, communications data, weather data sources, special notices, non-regulatory operational procedures, and airport diagrams. Coverage includes the conterminous U.S., Puerto Rico, and the Virgin Islands. The Chart Supplement U.S. shows data that cannot be readily depicted in graphic form; for example, airport hours of operations, types of fuel available, runway widths, lighting codes, etc.



## Top Tasks

- [View Alerts/Notices](#)
- [Search NOTAMs](#)
- [Order FAA Products](#)
- [Find Digital Products](#)
- [Review Aeronautical Data](#)
- [Search for Instrument Flight Procedures](#)

Explore the **FAA Data Portal**,  
your central location  
for all FAA aeronautical data.

## Contact Us

- [Aeronautical Inquiries](#)
- [Report Obstacle Light Outage](#)

# Lower 48 Chart Supplements



# Online Browse/Search

## Chart Supplements Basic Search



Effective Date:

0901Z

### Search By

Airport Identifier:

*Example: KOKC or OKC*

NAVAID Name:

[See NAVAID Search Information](#)

*Example: Texaco, Tex, etc.*

[Advanced Search](#)





**STEVENSVILLE****BAY BRIDGE** (W29) 1 W UTC-5(-4DT) N38°58.59' W76°19.80'

15 B TPA—1215(1200) NOTAM FILE W29

RWY 11-29: H2714X60 (ASPH) MIRL 0.3% up E

RWY 11: REIL. PAPI(P2L)—GA 3.0° TCH 30'.

RWY 29: REIL. PAPI(P2L)—GA 3.0° TCH 30'.

**SERVICE:** S4 FUEL 100LL LGT Dusk-Dawn; ACTVT REIL Rwy 11 and 29; MIRL Rwy 11-29—CTAF. PAPI Rwy 11 and 29 oprs consly. Rwy 11 PAPI unusable byd 5 degs left of cntrln. PAPIs baffled.

**NOISE:** Noise abatement proc in effect—AMGR. Noise sensitive residential area S of arpt; enter downwind for Rwy 29 over water twr S of fld.

**AIRPORT REMARKS:** Attended Mon-Sat 1230-2130Z±, Sun and Fed Hols unatnd. Wildlife on and invof arpt. Self serve fuel avbl H24 with credit card. TGL ops NA. Alert heli 8 NM east of arpt. Rotor craft: Use rgt tfc pat for Rwy 29. At all other times, use left tfc pat. Prkg fee.

**AIRPORT MANAGER:** 410-643-4364**WEATHER DATA SOURCES:** AWOS-3 120.575 (410) 643-8795.**COMMUNICATIONS:** CTAF/UNICOM 122.725

Ⓡ POTOMAC APP/DEP CON 119.0

**CLEARANCE DELIVERY PHONE:** For CD ctc Potomac Apch at 866-429-5882.**RADIO AIDS TO NAVIGATION:** NOTAM FILE BWI.

**BALTIMORE (L) (L) VORTACW** 115.1 BAL Chan 98 N39°10.26' W76°39.68' 138° 19.4 NM to fld. 150/11W.

DME unusable:

133°-155° byd 20 NM blo 10,000'

133°-155° byd 36 NM

300°-349° byd 35 NM

VOR unusable:

133°-155° byd 20 NM blo 10,000'

197°-217° byd 17 NM

260°-281° byd 15 NM

282°-292°

TACAN AZIMUTH unusable:

029°-042° byd 30 NM

133°-155° byd 20 NM blo 10,000'

180°-190° byd 17 NM

300°-349° byd 35 NM

WASHINGTON  
COPTER  
L-29E, 34F, 36I, A  
IAP



- SAMPLE**
- ① CITY NAME
- ② AIRPORT NAME (ALTERNATE NAME) (LTS)(KLTS) CIV/MIL 3 N UTC-6(-5DT) N34°41.93' W99°20.20'
- ③ 200 B TPA-1000(800) AOE LRA Class IV, ARFF Index A NOTAM FILE ORL Not insp. MON Airport
- ④ JACKSONVILLE COPTER H-4G, L-19C IAP, DIAP, AD
- ⑤ ⑥ ⑦ ⑧
- ⑨ RWY 18-36: H12004X200 (ASPH-CONC-GRVD)  
S-90, D-160, 2D-300 PCN 80 R/B/W/T HIRL CL  
RWY 18: RLLS. MALSF. TDZL. REIL. PAPI(P2R)—GA 3.0° TCH 36'.  
RVR-TMR. Thld dspcd 300'. Trees. Rgt tfc. 0.3% up.  
RWY 36: ALSF1. 0.4% down.
- ⑩ RWY 09-27: H6000X150 (ASPH) PCR 1234 R/B/W/T MIRL  
RWY 173-353: H3515X150 (ASPH-PFC) AUW PCN 59 F/A/W/T
- ⑪ LAND AND HOLD-SHORT OPERATIONS
- | LDG RWY | HOLD-SHORT POINT | AVBL LDG DIST |
|---------|------------------|---------------|
| RWY 18  | 09-27            | 6500          |
| RWY 36  | 09-27            | 5400          |
- ⑫ RUNWAY DECLARED DISTANCE INFORMATION
- RWY 18: TORA-12004 TODA-12004 ASDA-11704 LDA-11504  
RWY 36: TORA-12004 TODA-12004 ASDA-12004 LDA-11704
- ⑬ ARRESTING GEAR/SYSTEM
- RWY 18 HOOK E5 (65' OVRN) BAK-14 BAK-12B (1650')  
BAK-14 BAK-12B (1087') HOOK E5 (74' OVRN) RWY 36
- ⑭ SERVICE: S4 FUEL 100LL, JET A OX 1, 3 LGT ACTIVATE MALSR Rwy 29,  
REIL Rwy 11, VASI Rwy 11, HIRL Rwy 11-29, PAPI Rwy 17 and Rwy  
35, MIRL Rwy 17-35—CTAF. **MILITARY—A-GEAR E-5** connected on dep  
end, disconnected on apch end.
- JASU 3(AM32A-60) 2(A/M32A-86) FUEL J8(Mil)(NC-100, A)  
FLUID W SP PRESAIR LOX OIL O-128 MAINT S1 Mon-Fri 1000-2200Z†  
TRAN ALERT Avbl 1300-0200Z† svc limited weekends.
- ⑮ NOISE: Noise abatement 3 miles from Rwy 18. Contact tower manager.
- ⑯ AIRPORT REMARKS: Special Air Traffic Rules—Part 93, see Regulatory Notices. Attended 1200-0300Z†. Parachute Jumping. Deer  
invof arpt. Heavy jumbo jet training surface to 9000'. Twy A clsd indef. Flight Notification Service (ADCUS) avbl.
- ⑰ MILITARY REMARKS: ANG PPR/Official Business Only. Base OPS DSN 638-4390, C503-335-4222. Ctc Base OPS 15 minutes prior  
to ldg and after dep. Limited tran parking.
- ⑱ AIRPORT MANAGER: (580) 481-5739
- ⑲ WEATHER DATA SOURCES: AWOS-1 120.3 (202) 426-8000. LAWRS.
- ⑳ COMMUNICATIONS: SFA CTAF 122.8 UNICOM 122.95 ATIS 127.25 273.5 (202) 426-8003 PTD 372.2
- ㉑ NAME FSS (ORL) on arpt. 123.65 122.65 122.2  
NAME RCO 112.2T 112.1R (NAME RADIO)  
⑳ NAME APP/DEP CON 128.35 257.725 (1200-0400Z†)  
TOWER 119.65 255.6 (1200-0400Z†) GND CON 121.7 GCO 135.075 (ORLANDO CLNC) CLNC DEL 125.55  
CPDLC D-HZWXR, D-TAXI, DCL (LOGON KMEM)  
NAME COMD POST (GERONIMO) 311.0 321.4 6761 PMSV METRO 239.8 NAME OPS 257.5
- ㉒ AIRSPACE: CLASS B See VFR Terminal Area Chart.
- ㉓ VOR TEST FACILITY (VOT): 116.7
- 
- ⑩

## ① CITY/AIRPORT NAME

Civil and joint Civil/Military airports which are open to the public are listed alphabetically by state and associated city. Where the city name is different from the airport name the city name will appear on the line above the airport name. Airports with the same associated city name will be listed alphabetically by airport name and will be separated by a dashed rule line. A solid rule line will separate all others. FAA approved helipads and seaplane landing areas associated with a land airport will be separated by a dotted line. Military airports and private-use (limited civil access) joint Military/Civil airports are listed alphabetically by state and official airport name.

## ② ALTERNATE NAME

Alternate names, if any, will be shown in parentheses.

## ③ LOCATION IDENTIFIER

The location identifier is a three or four character FAA code followed by a four-character ICAO code, when assigned, to airports. If two different military codes are assigned, both codes will be shown with the primary operating agency's code listed first. These identifiers are used by ATC in lieu of the airport name in flight plans, flight strips and other written records and computer operations. Zeros will appear with a slash to differentiate them from the letter "O".

## ④ OPERATING AGENCY

Airports within this directory are classified into two categories, Military/Federal Government and Civil airports open to the general public, plus selected private-use airports. The operating agency is shown for military, private-use and joint use airports. The operating agency is shown by an abbreviation as listed below. When an organization is a tenant, the abbreviation is enclosed in parenthesis. No classification indicates the airport is open to the general public with no military tenant.

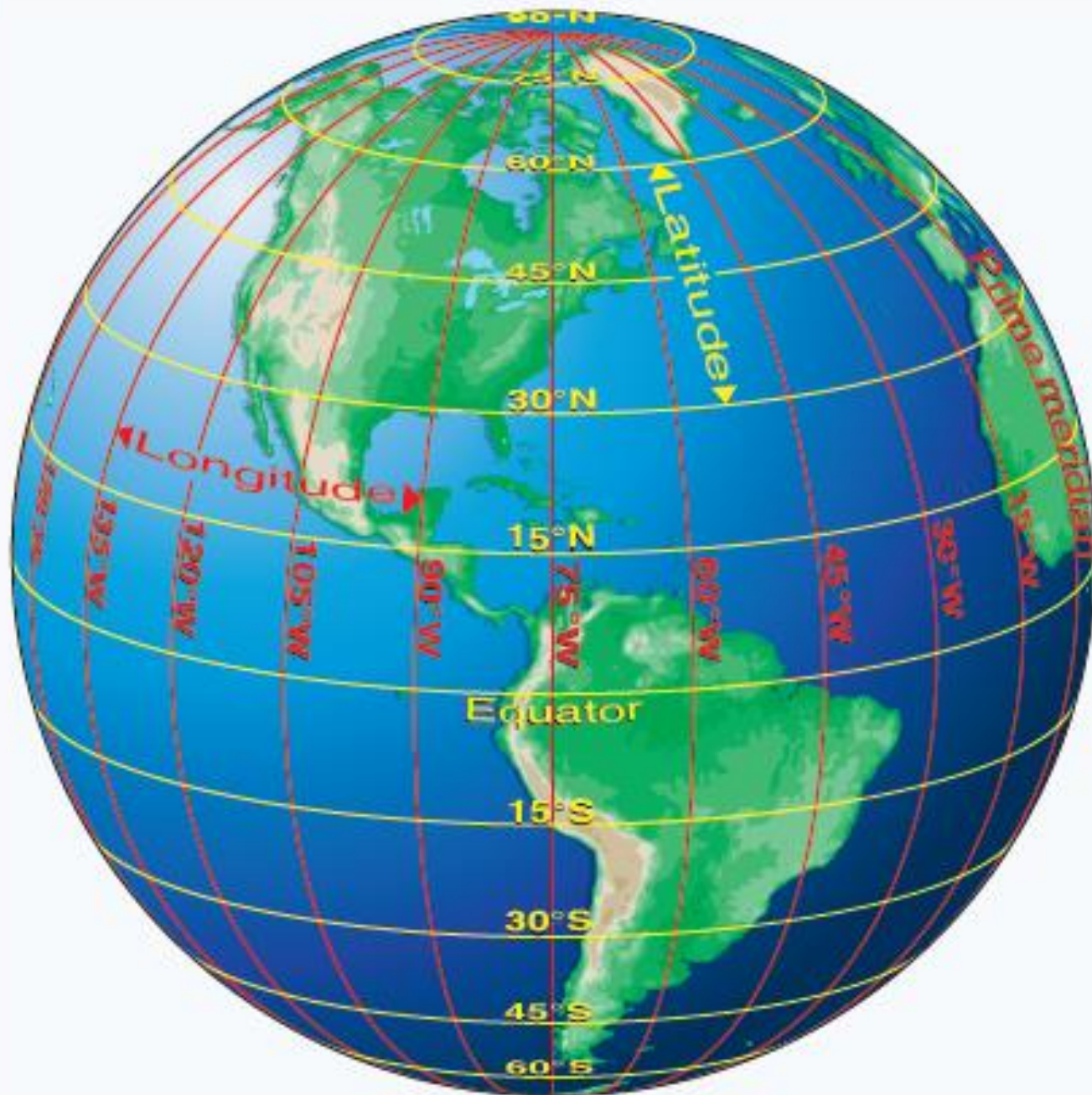
A	US Army	MC	Marine Corps
AFRC	Air Force Reserve Command	MIL/CIV	Joint Use Military/Civil Limited Civil Access
AF	US Air Force	N	Navy
ANG	Air National Guard	NAF	Naval Air Facility
AR	US Army Reserve	NAS	Naval Air Station
ARNG	US Army National Guard	NASA	National Air and Space Administration
CG	US Coast Guard	P	US Civil Airport Wherein Permit Covers Use by Transient Military Aircraft
CIV/MIL	Joint Use Civil/Military Open to the Public	PVT	Private Use Only (Closed to the Public)
DND	Department of National Defense Canada		
DOE	Department of Energy		

## ⑤ AIRPORT LOCATION

Airport location is expressed as distance and direction from the center of the associated city in nautical miles and cardinal points, e.g., 3 N.

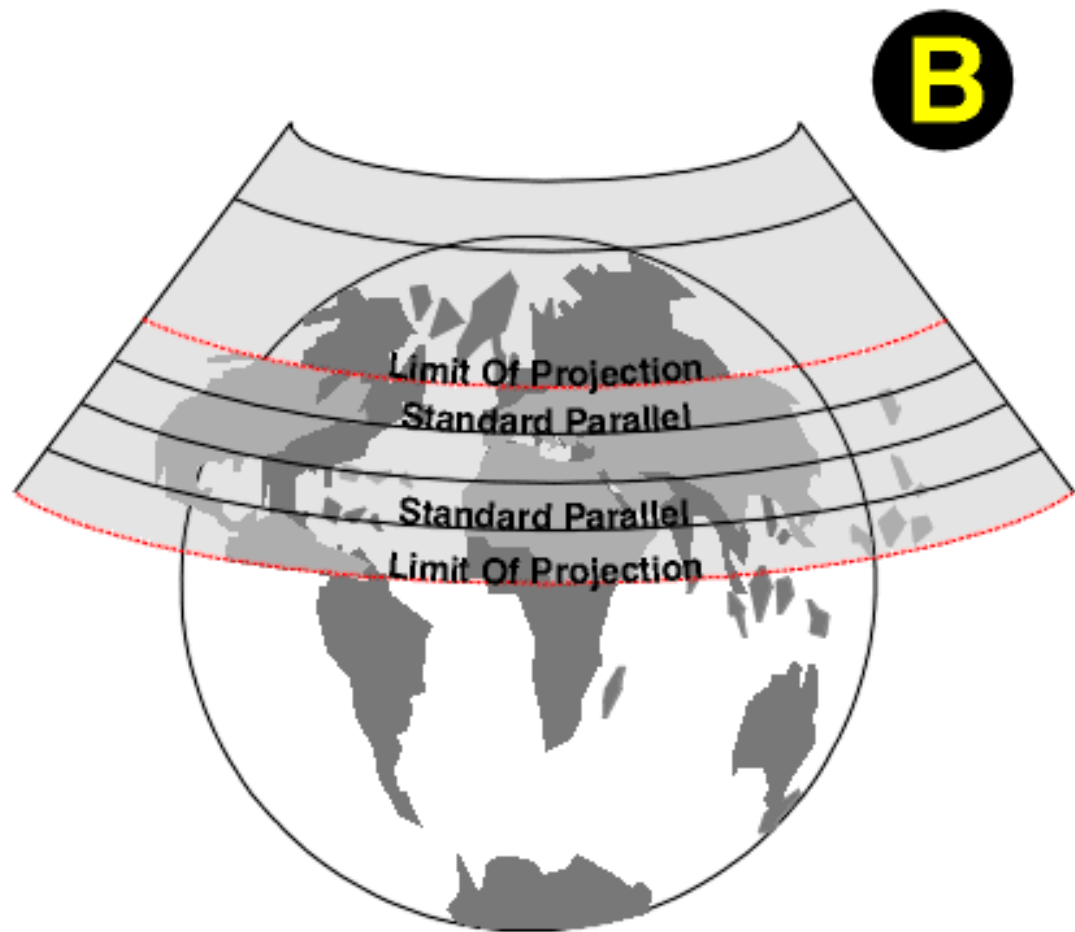
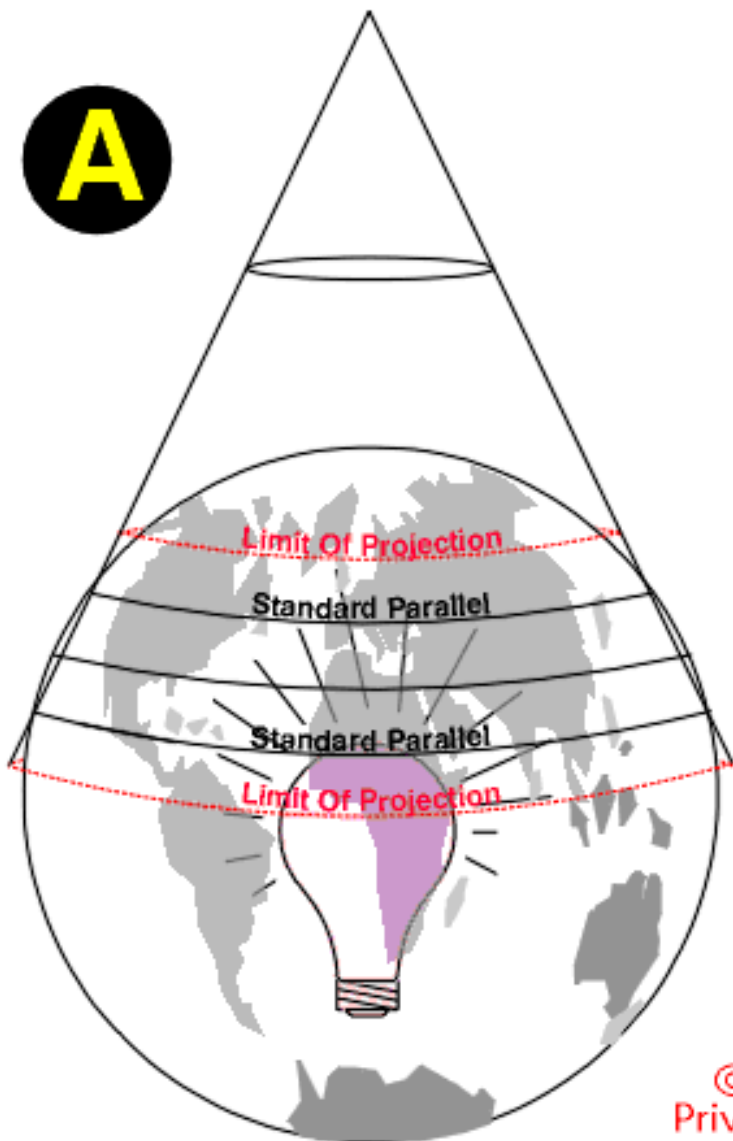
## ⑥ TIME CONVERSION

Hours of operation of all facilities are expressed in Coordinated Universal Time (UTC) and shown as "Z" time. The directory indicates the number of hours to be subtracted from UTC to obtain local standard time and local daylight saving time UTC-5(-4DT). The symbol ‡

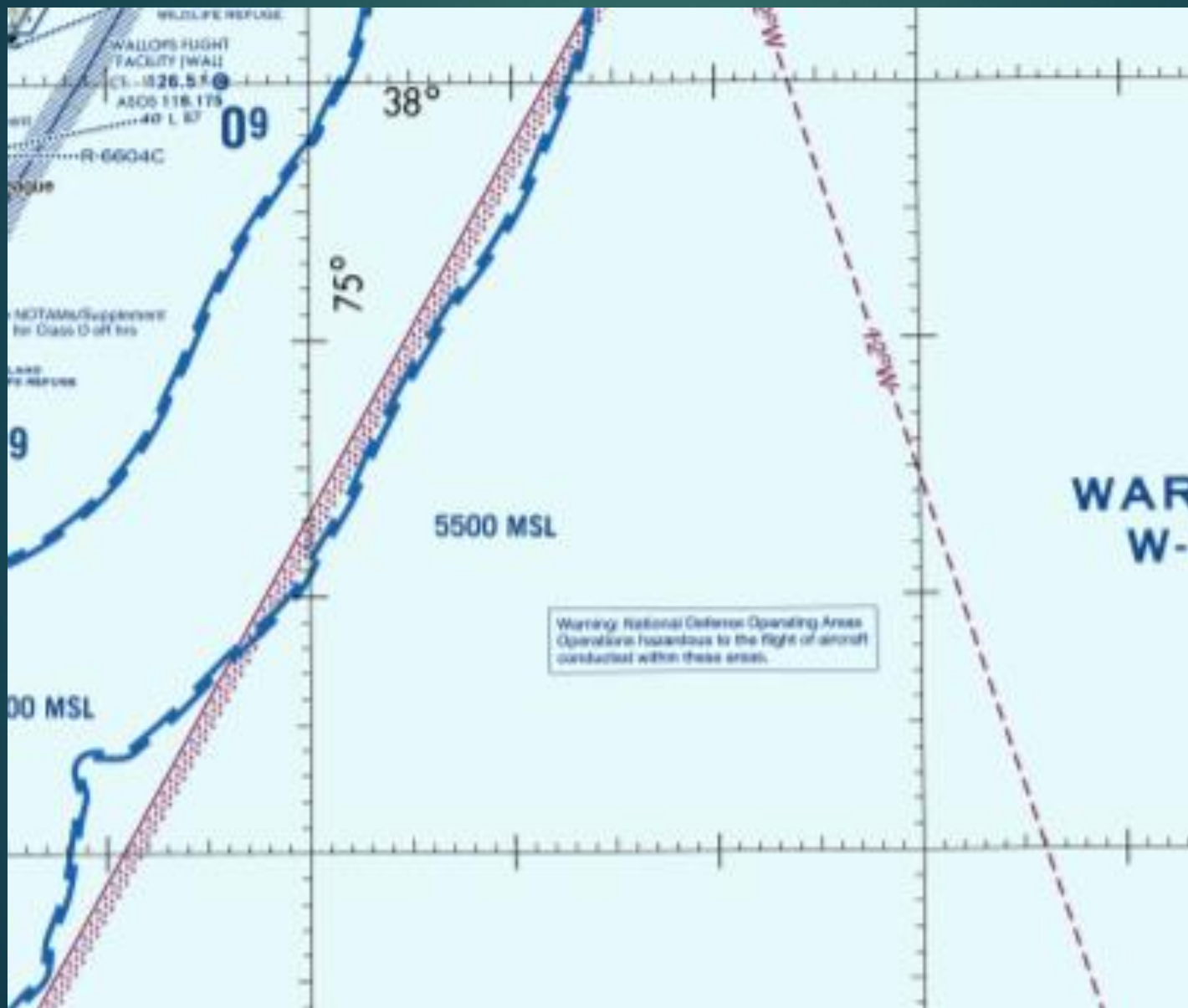


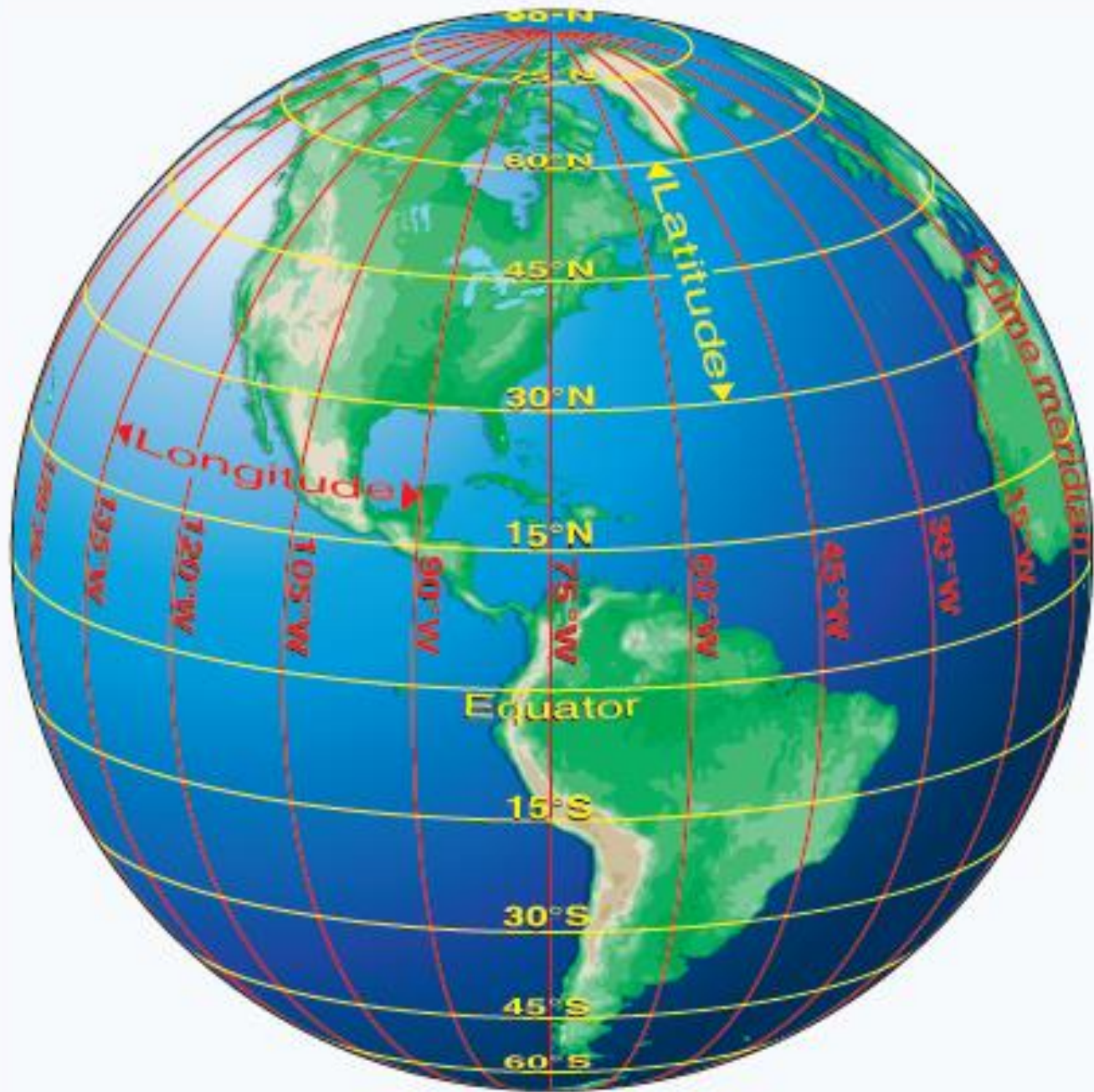
Round  
to Flat

# THE LAMBERT CONFORMAL CONIC PROJECTION



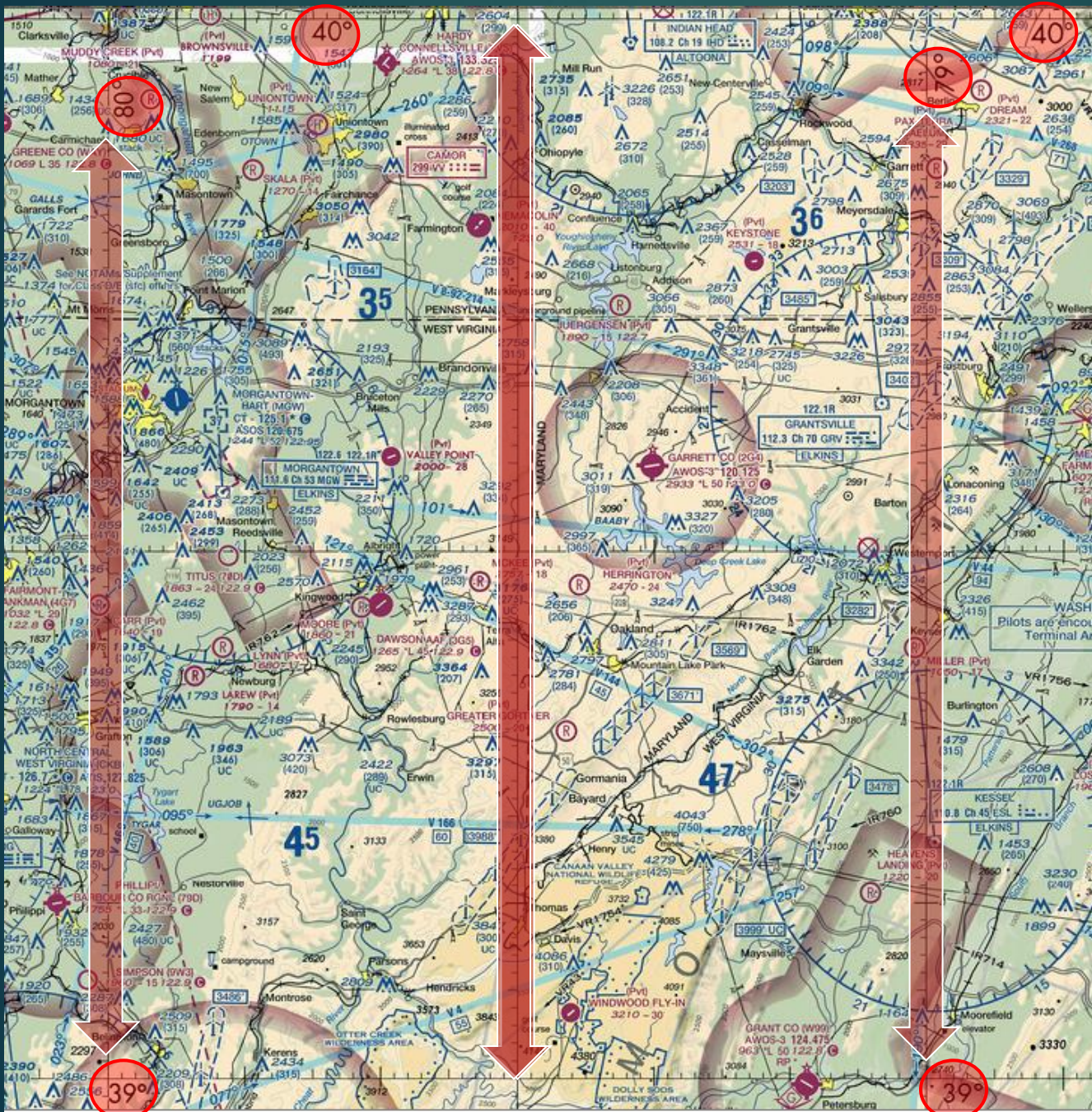
# Latitude and Longitude







# Latitude and Longitude



# Latitude and Longitude

40°

40°

40°

40°

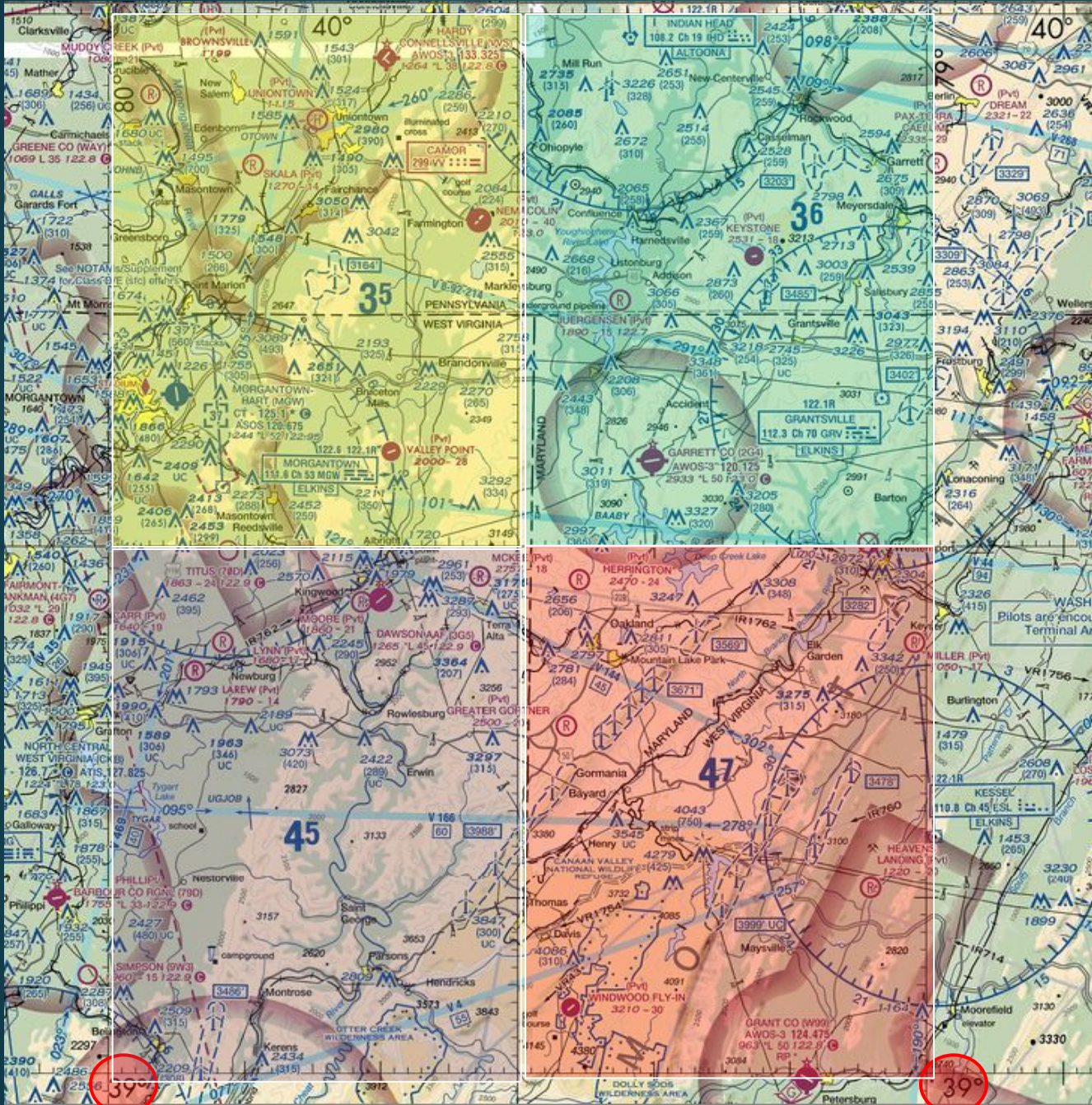
39°

39°



# Latitude and Longitude

# Quadrangles







# United States Time Zones

**ALASKA DAYLIGHT TIME**  
AKDT (UTC-8)

**07:51:54**



**ALEUTIAN DAYLIGHT TIME**  
HADT (UTC-9)

**06:51:54**

**HAWAII STANDARD TIME**  
HST (UTC-10)

**05:51:54**



**SAMOA STANDARD TIME**  
SST (UTC-11)

**04:51:54**

**CHAMORRO STANDARD TIME**

**PACIFIC DAYLIGHT TIME**  
PDT (UTC-7)

**08:51:54**



**MOUNTAIN DAYLIGHT TIME**  
MDT (UTC-6)

**09:51:54**



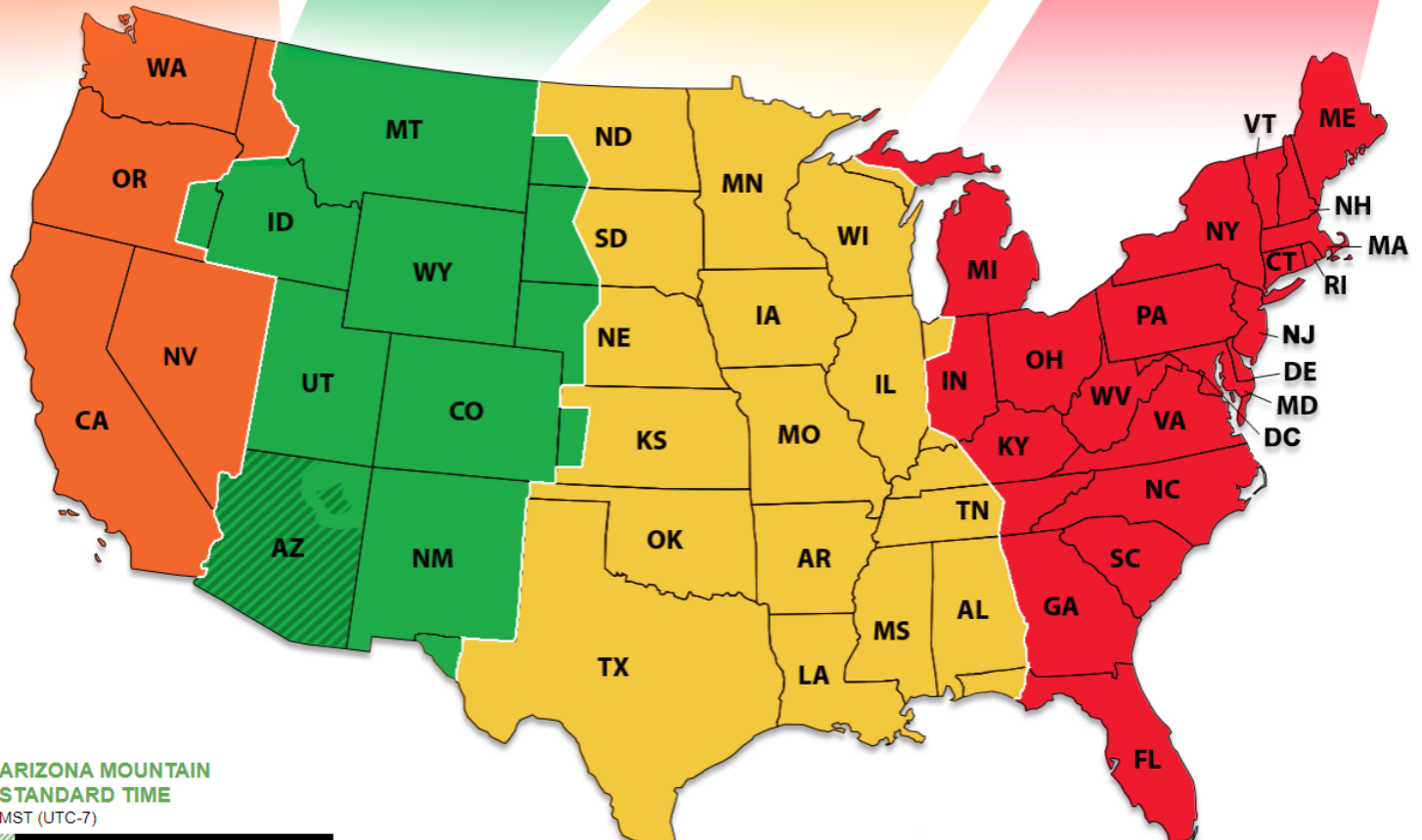
**CENTRAL DAYLIGHT TIME**  
CDT (UTC-5)

**10:51:54**



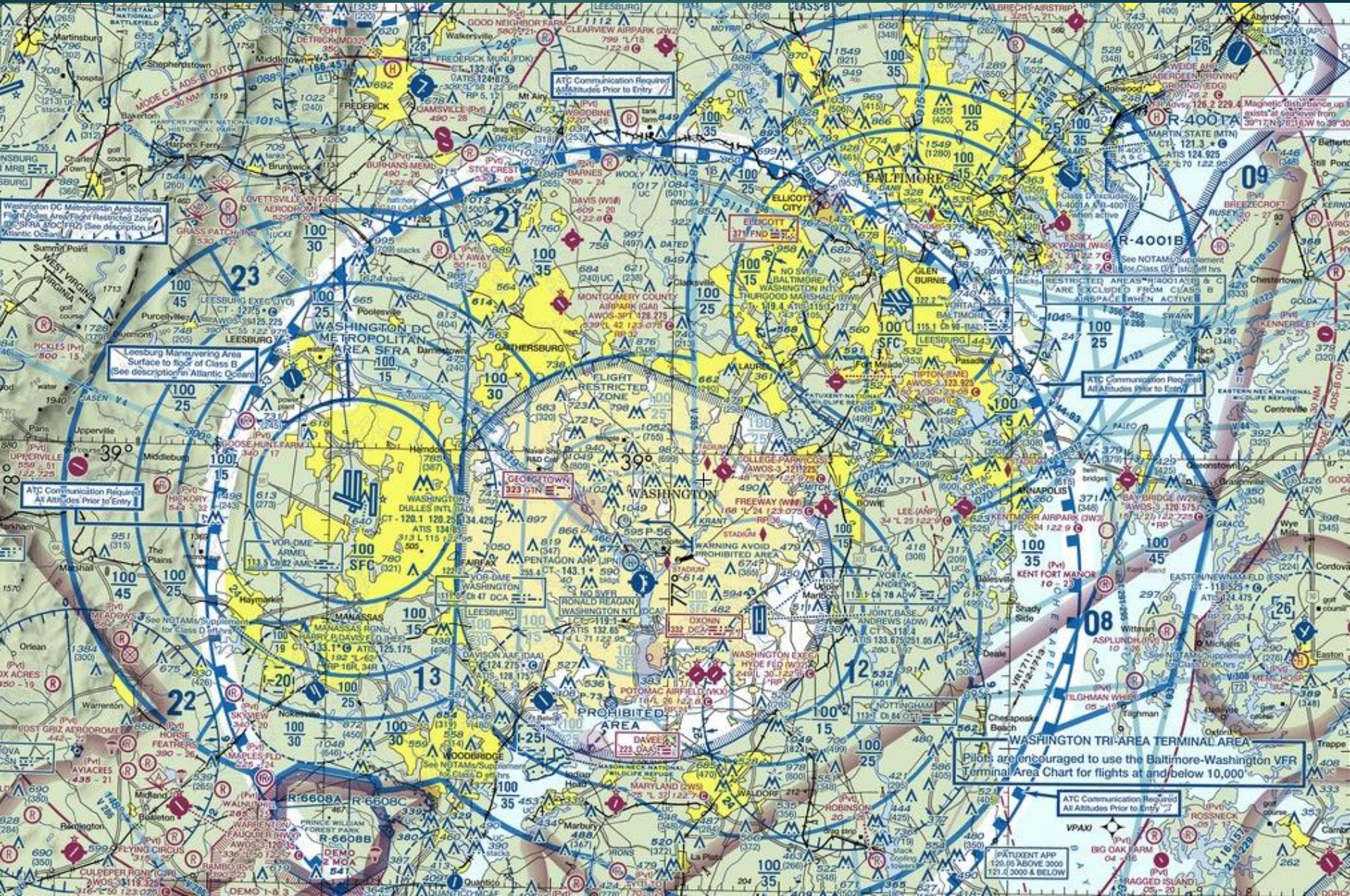
**EASTERN DAYLIGHT TIME**  
EDT (UTC-4)

**11:51:54**

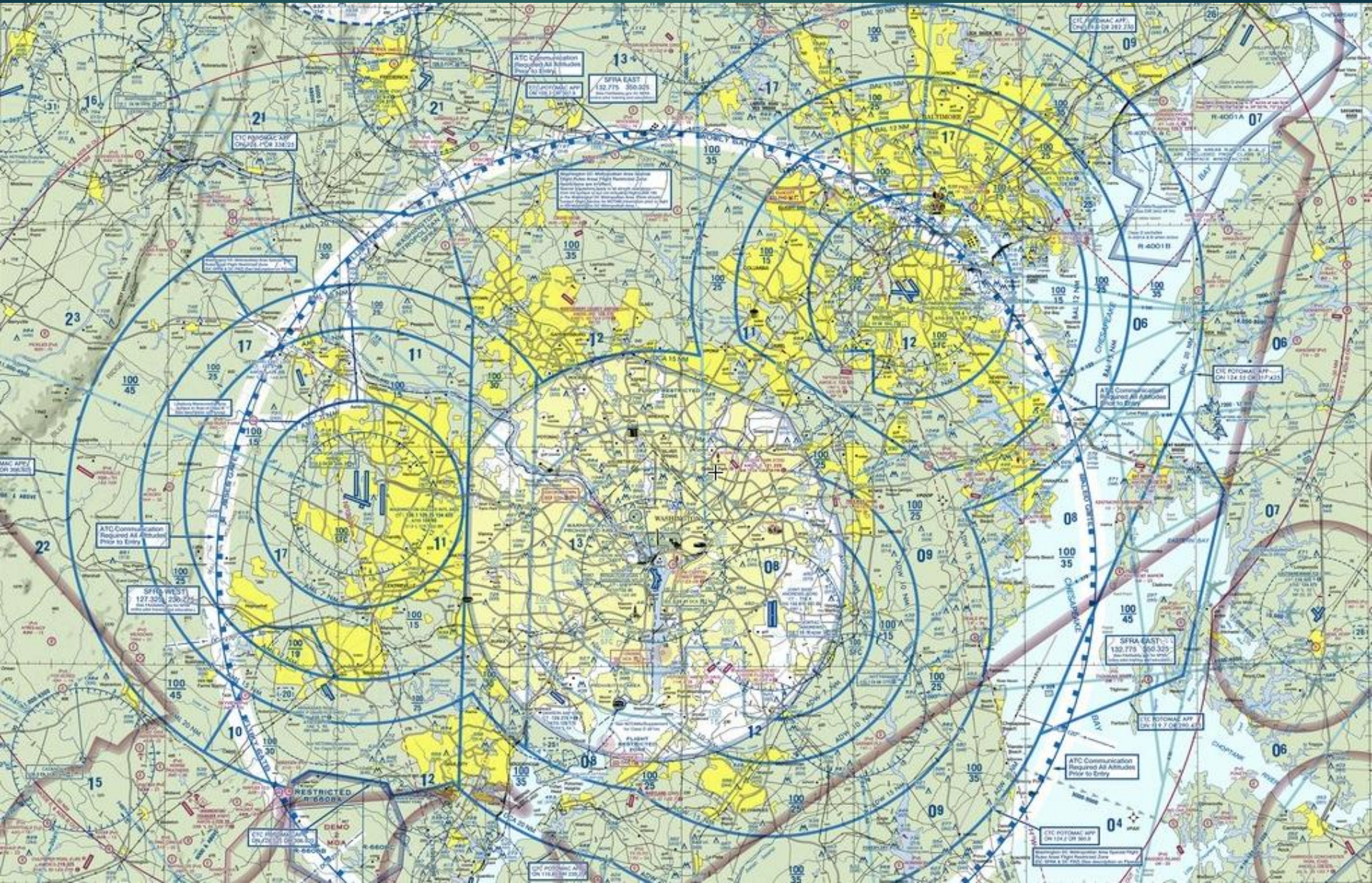


<b>Where am I? (Visual)</b>	<b>Where am I? (Radio)</b>	<b>What should I avoid?</b>	<b>Where am I going?</b>
<b>land features</b>	<b>Radio aids to navigation</b>	<b>terrain</b>	<b>airports</b>
<b>water</b>	<b>RNAV waypoints</b>	<b>obstructions</b>	<b>beacons</b>
<b>populated places</b>		<b>airspace</b>	<b>VFR flyways</b>
<b>roads/rail track/power lines</b>			

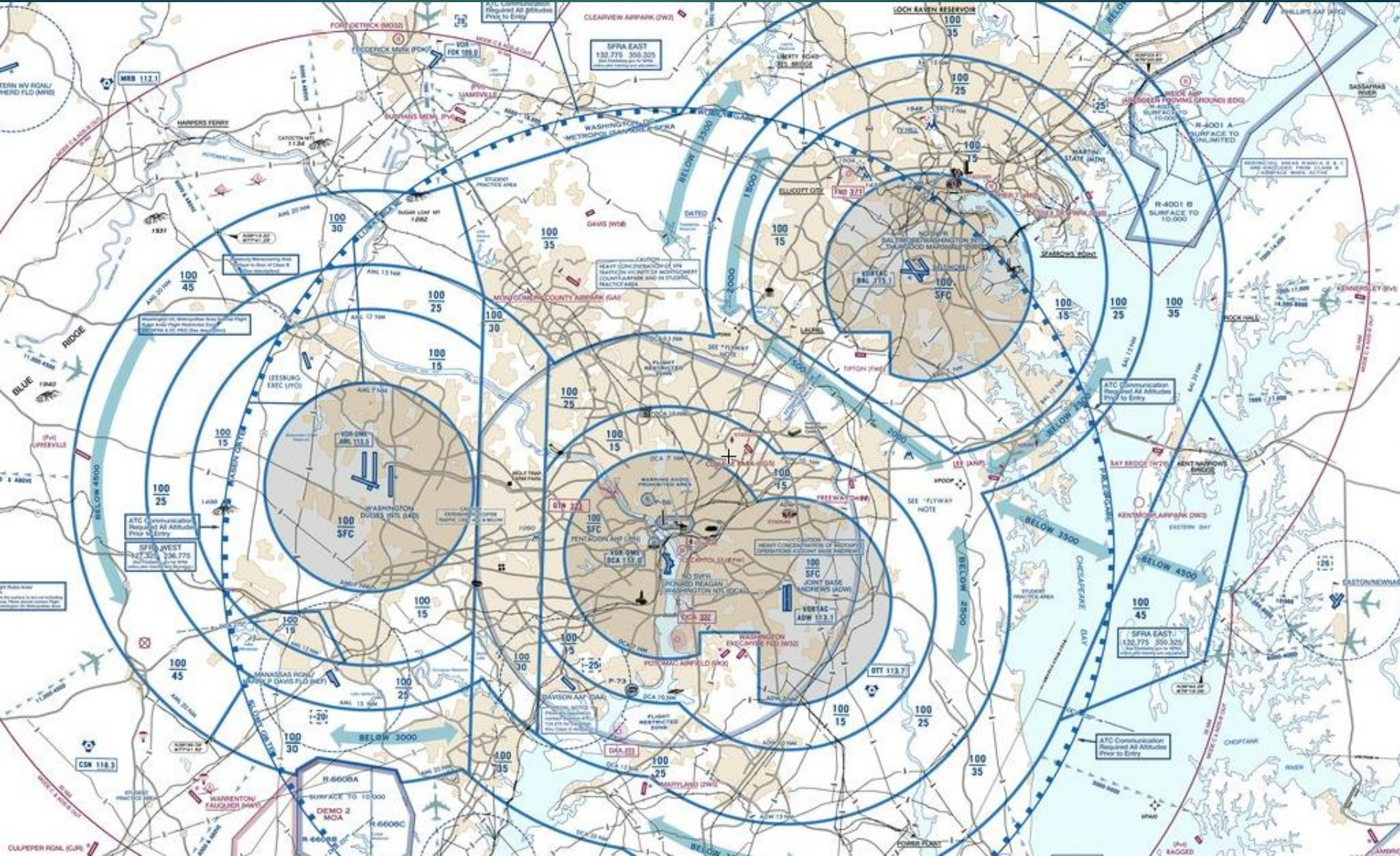
# Sectional



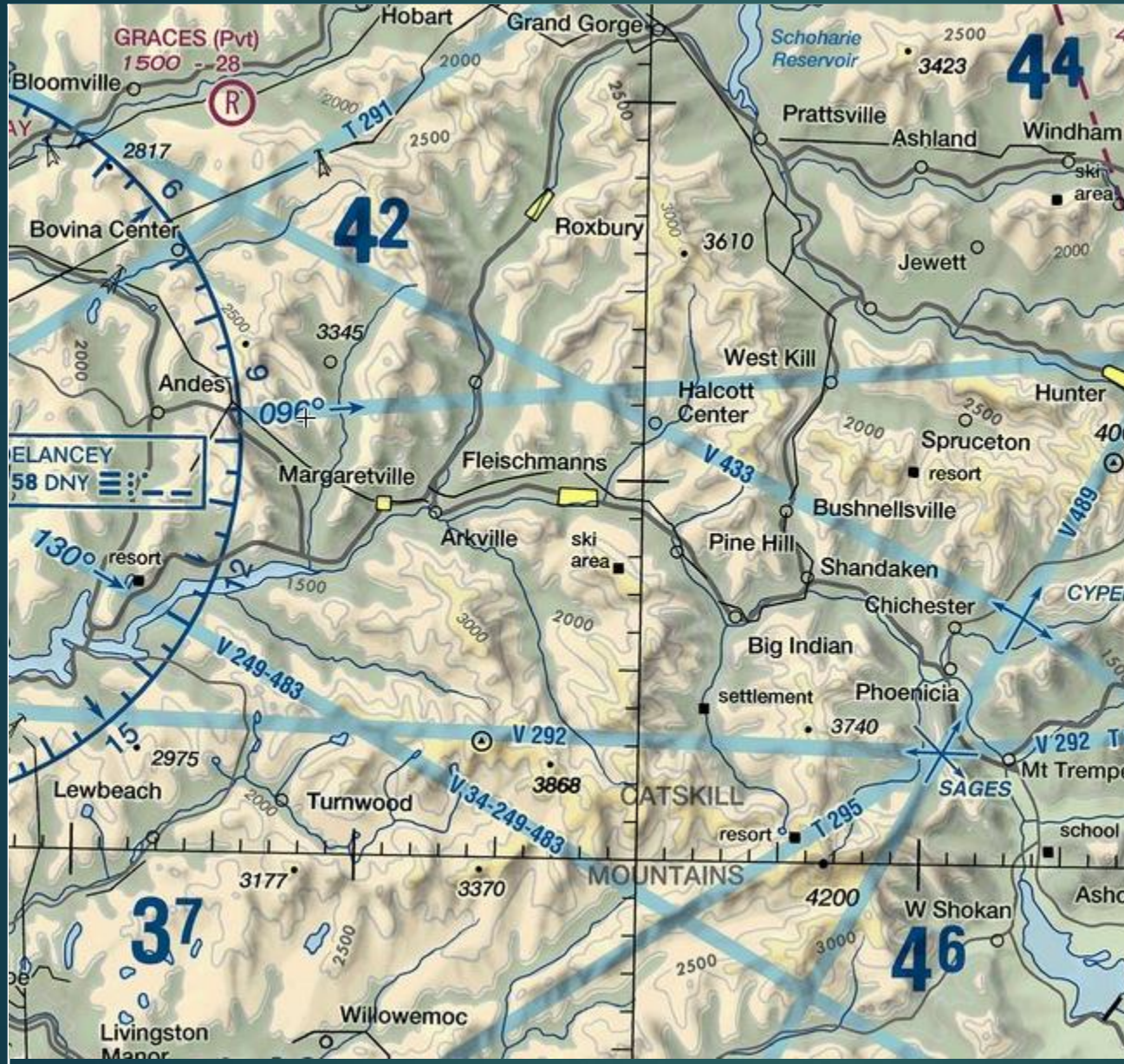
# Terminal Area Chart



# VFR Flyway Chart

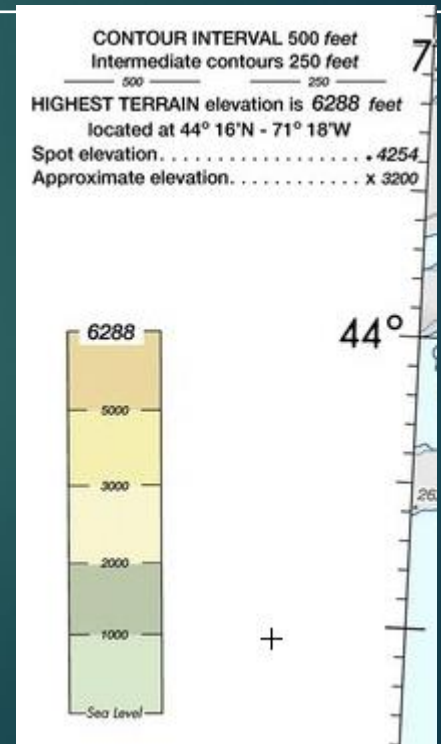


# Land Features: Contour Lines, Shaded Relief, Color Tints

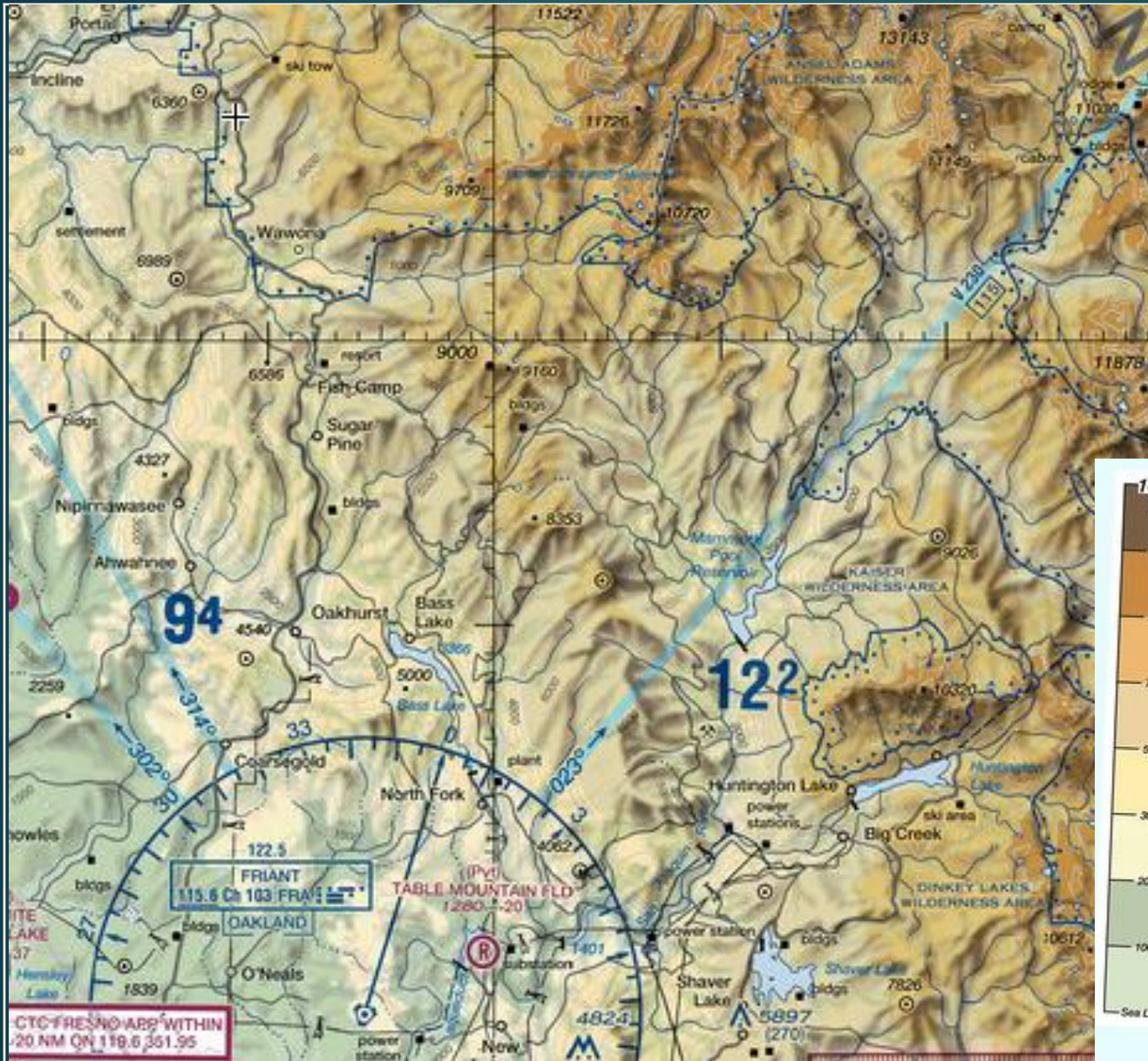


Contour lines mark out 500' elevation changes

Relief shading as if light is coming from northwest

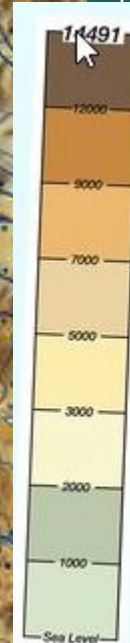


# Land Features: Contour Lines, Shaded Relief, Color Tints



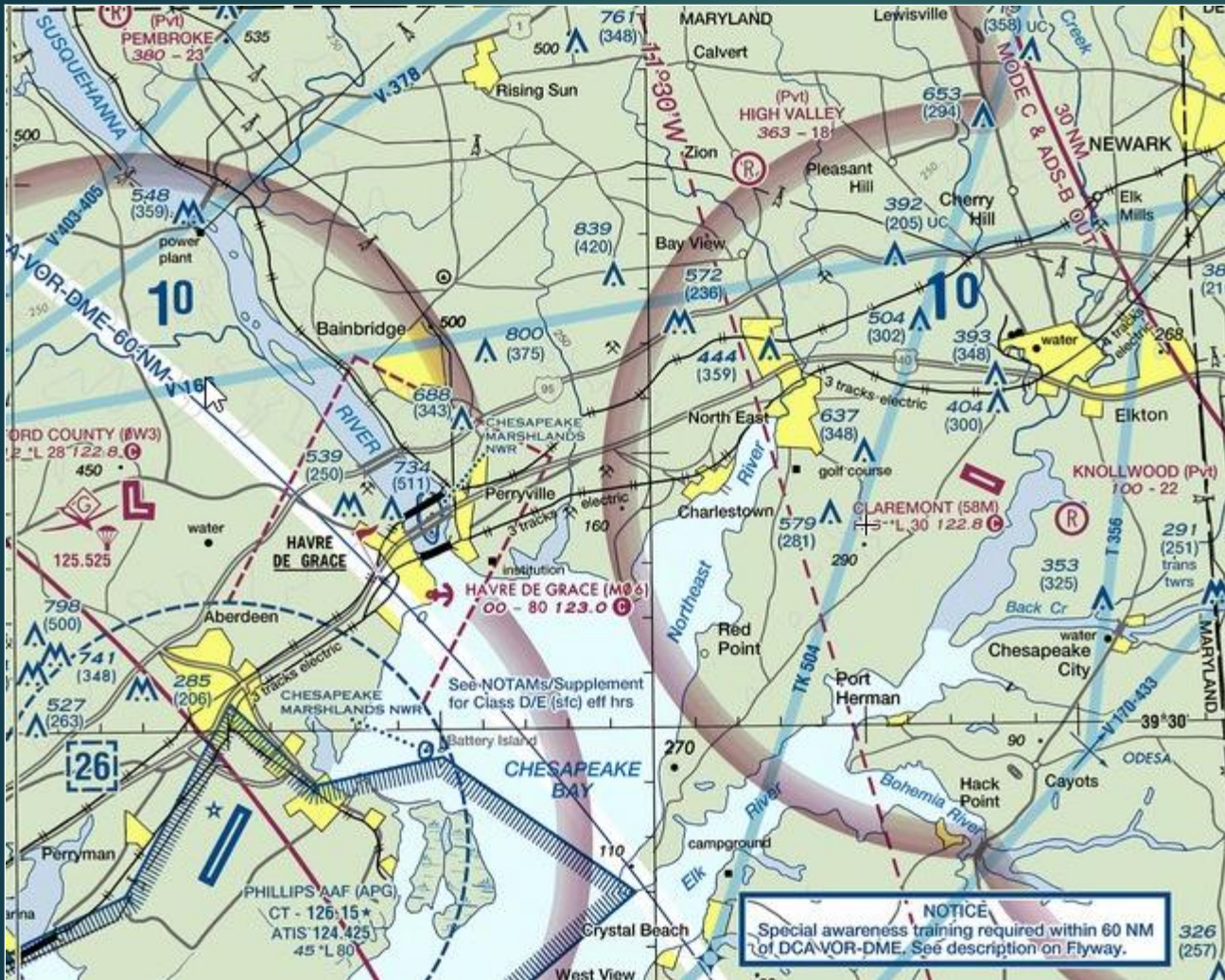
Contour lines mark out 500' elevation changes

Relief shading as if light is coming from northwest



CONTOUR INTERVAL 500 feet  
Intermediate contours 250 feet  
Auxiliary contours 100 feet  
— 500 — 250 — 100 —  
HIGHEST TERRAIN elevation is 14491 feet  
located at 36° 35' N - 118° 18' W  
Spot elevation. . . . . 4254  
Approximate elevation. . . . . x 3200

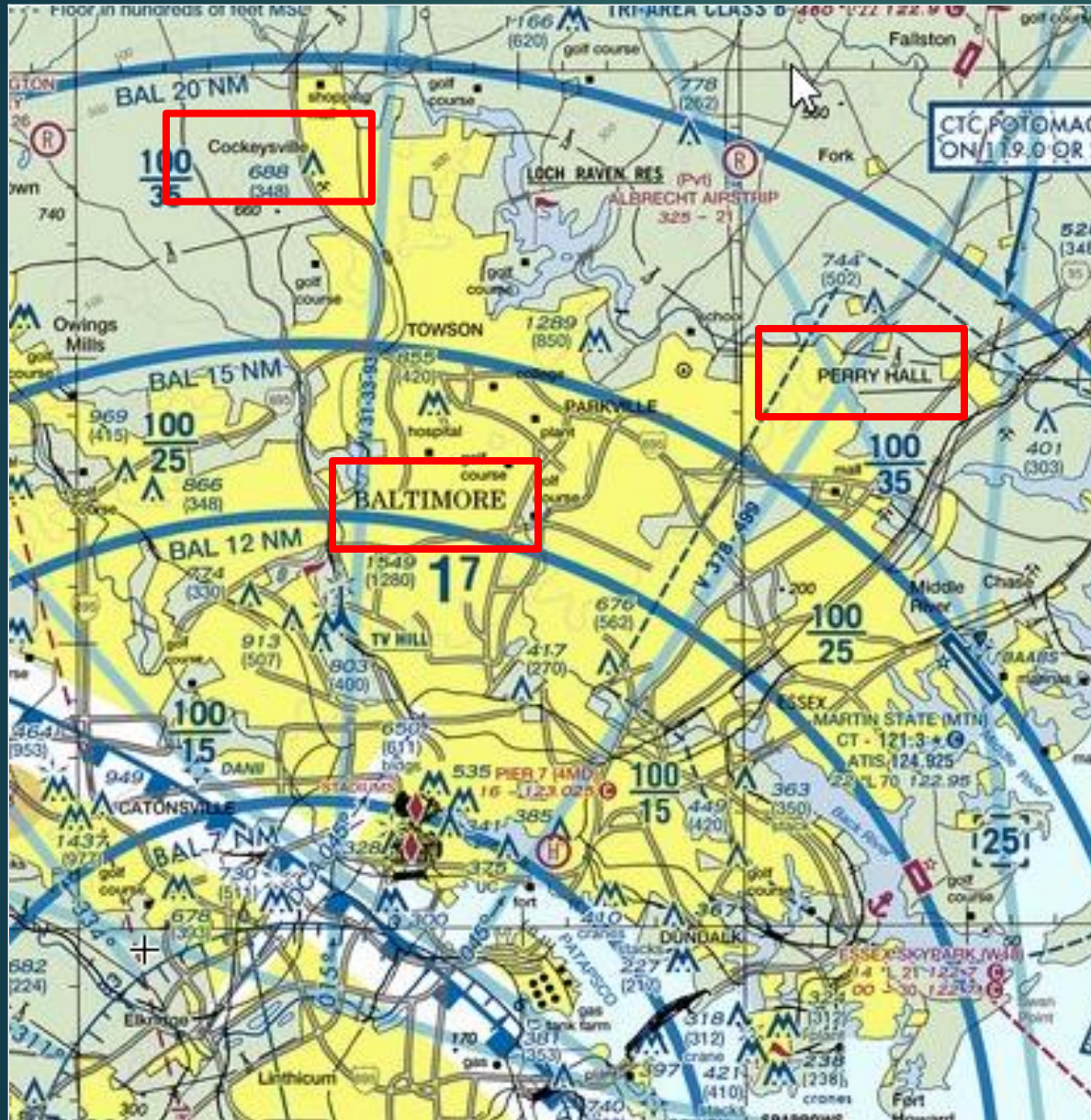
# Water



Water features are depicted using two tones of blue. "Open water" is lighter blue and "Inland water" a darker blue.

Open water locates the shoreline limit of coastal waters at the mean high water level.

# Populated Places



Yellow tinted areas indicate populated places.

Small circles indicate an area too small to depict using yellow tint.

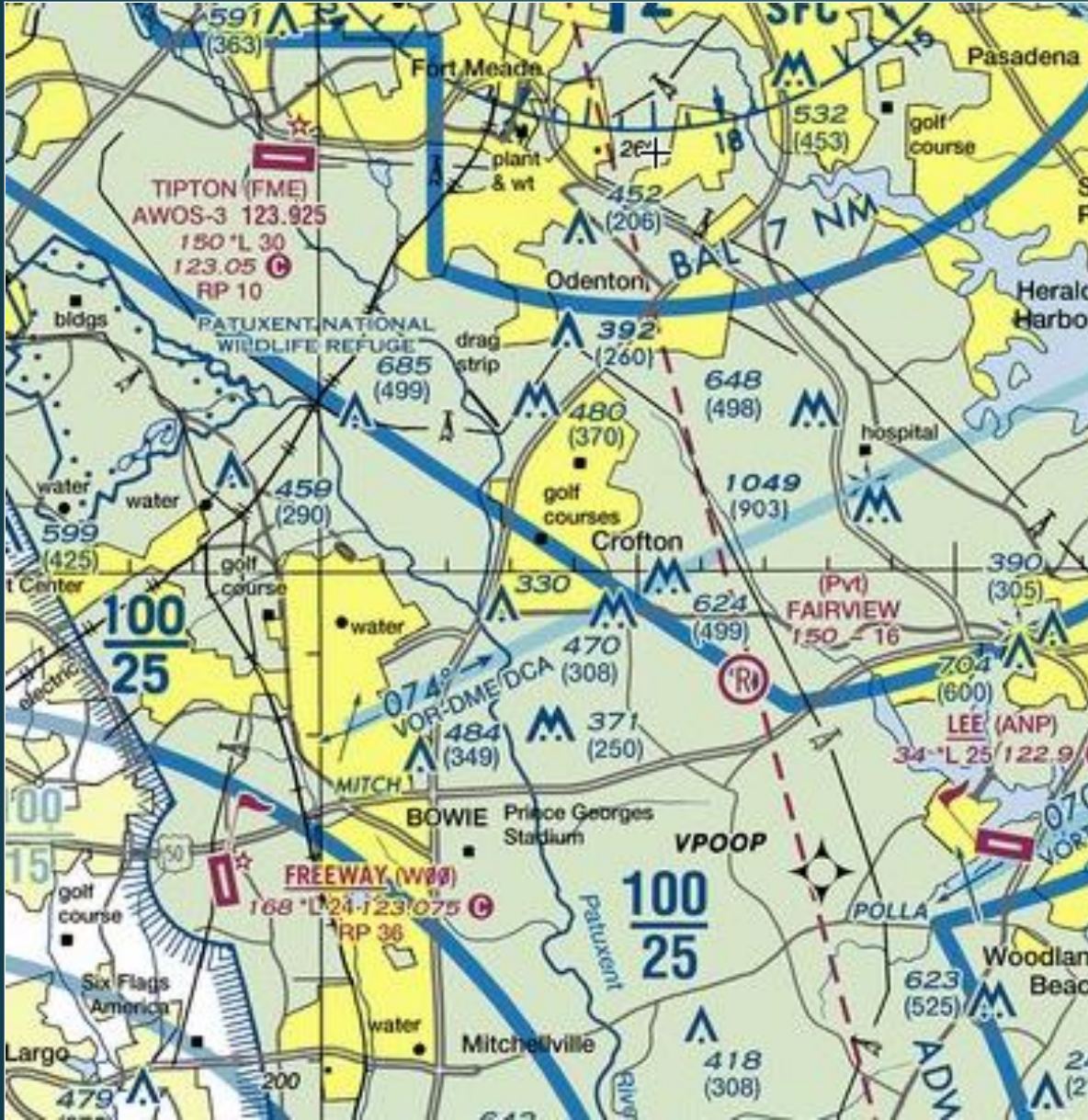
Font style and size indicates category of populated area.

**BALTIMORE**

PERRY HALL

Cockeysville

# Roads, Rail Track, Power Lines



## Railroads:

Single Track	
Double Track	

## Roads:

Dual-Lane Divided Highway Category 1	
Primary Category 2	
Secondary Category 2	

## Power lines:

--



# Airspace: Class B (Sectional Chart)





# Airspace: Class B (Data Block)



ID: LGA

CT freq: 118.7

ATIS: 125.95

Field Elev: 21 ft

L: lighted dusk to dawn

Longest runway: 7000 ft

Unicom: 122.95

NO SVFR

# Airspace: Class C



Note that even though the circles are red, the airport is depicted as blue. (All airports with CTs are blue on the sectional)

# Airspace: Class D



CTC, NEW YORK APP WITHIN 20 NM, ON 120.05 343.75

LONG ISLAND CLASS C

# Airspace: Class E to Surface



Note that the airport is depicted in magenta: E is controlled airspace but MVN does not have a control tower.

# Airports

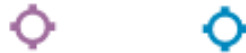
## Landplane: Civil

Airports having control towers (CT) are shown in blue, all others are shown in magenta.

All recognizable runways, including some that may be closed, are shown for visual identification purposes. Fuel available.

Runway patterns will be depicted at airports with at least one hard surfaced runway 1500' or greater in length.

Non-Towered      Towered



## Landplane: Civil-Military

## Civil-Military

## Landplane: Military

Refueling and repair facilities not indicated.

Non-Towered      Towered



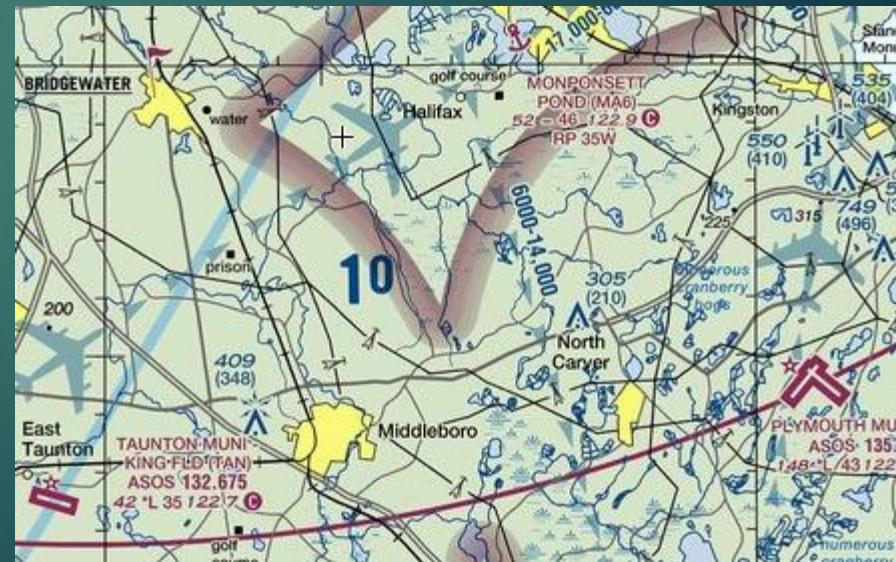
Non-Towered      Towered



## Sectional:



## TAC:





# Tour of SkyVector

[WWW.SKYVECTOR.COM](http://WWW.SKYVECTOR.COM)