

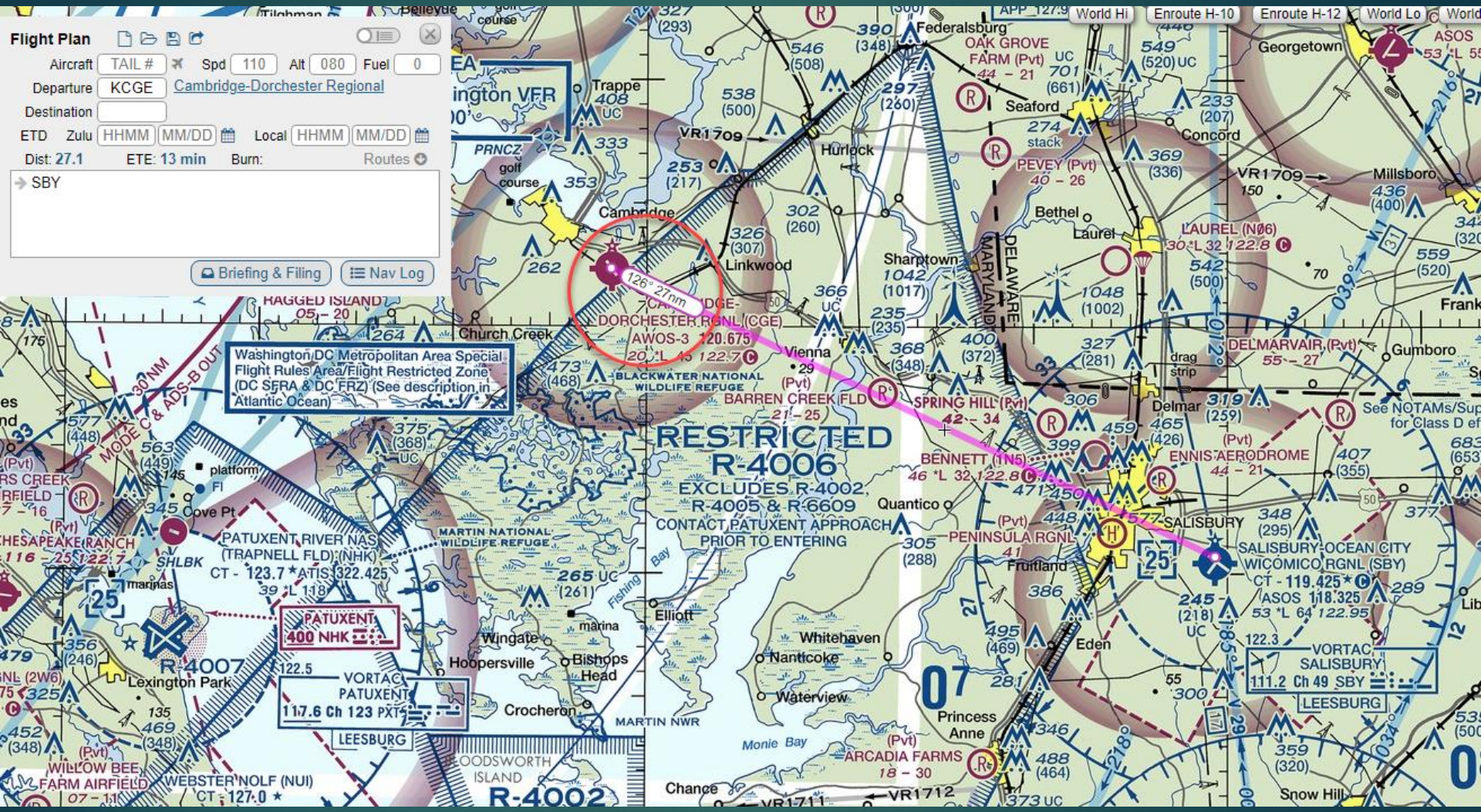
VORs

QUESTIONS AND ANSWERS

What OBS setting would you use to navigate direct TO Salisbury-Ocean City Wicomico Regional Airport (SBY) from Cambridge-Dorchester airport (CBE) via VOR?



What OBS setting would you use to navigate direct TO Salisbury-Ocean City Wicomico Regional Airport (SBY) from Cambridge-Dorchester airport (CBE) via VOR?



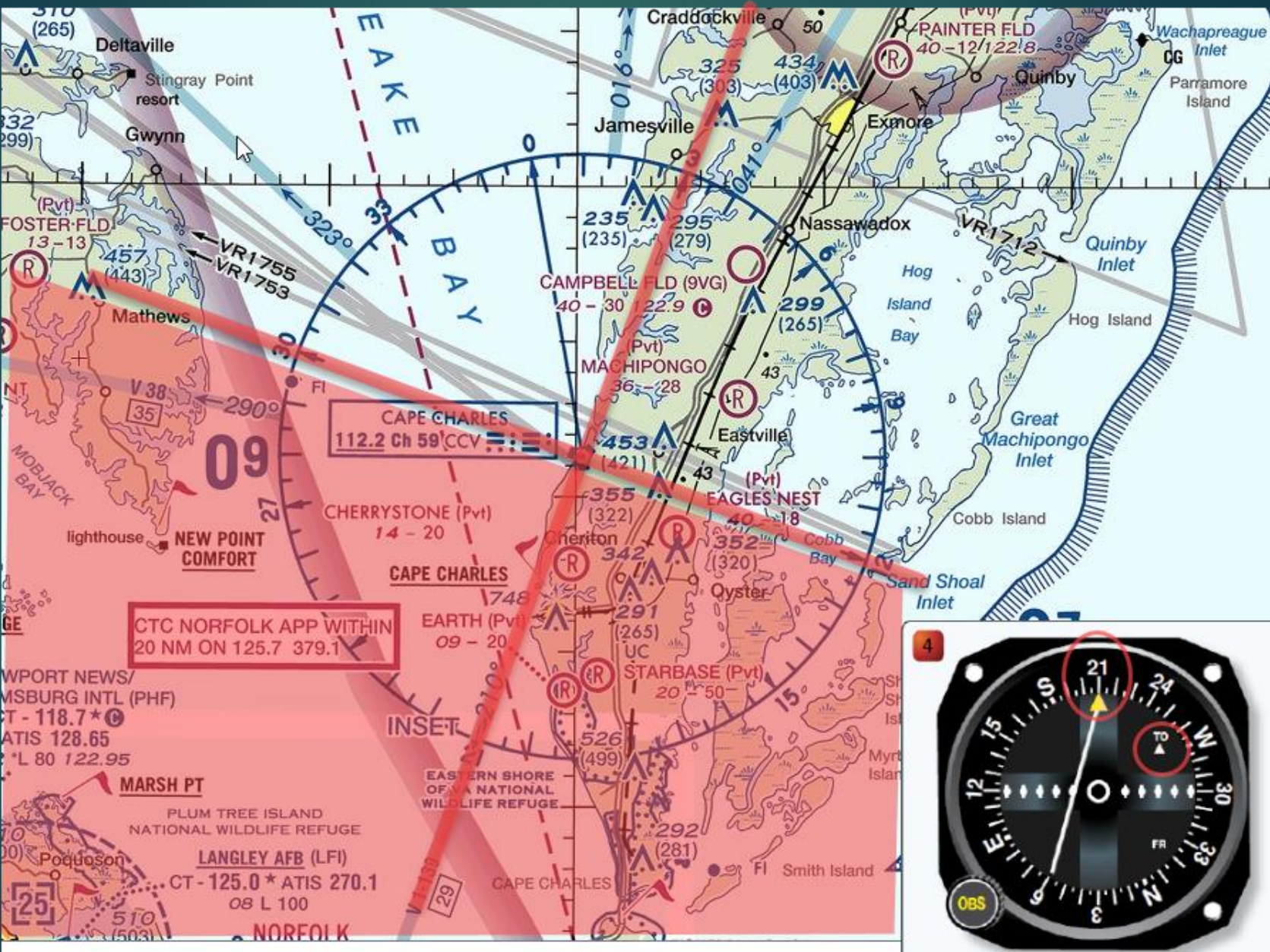
Your VOR receiver is tuned to the Cape Charles VOR (northeast of Norfolk, VA). Its display looks like Figure 28, #4. Where are you in relation to the station?



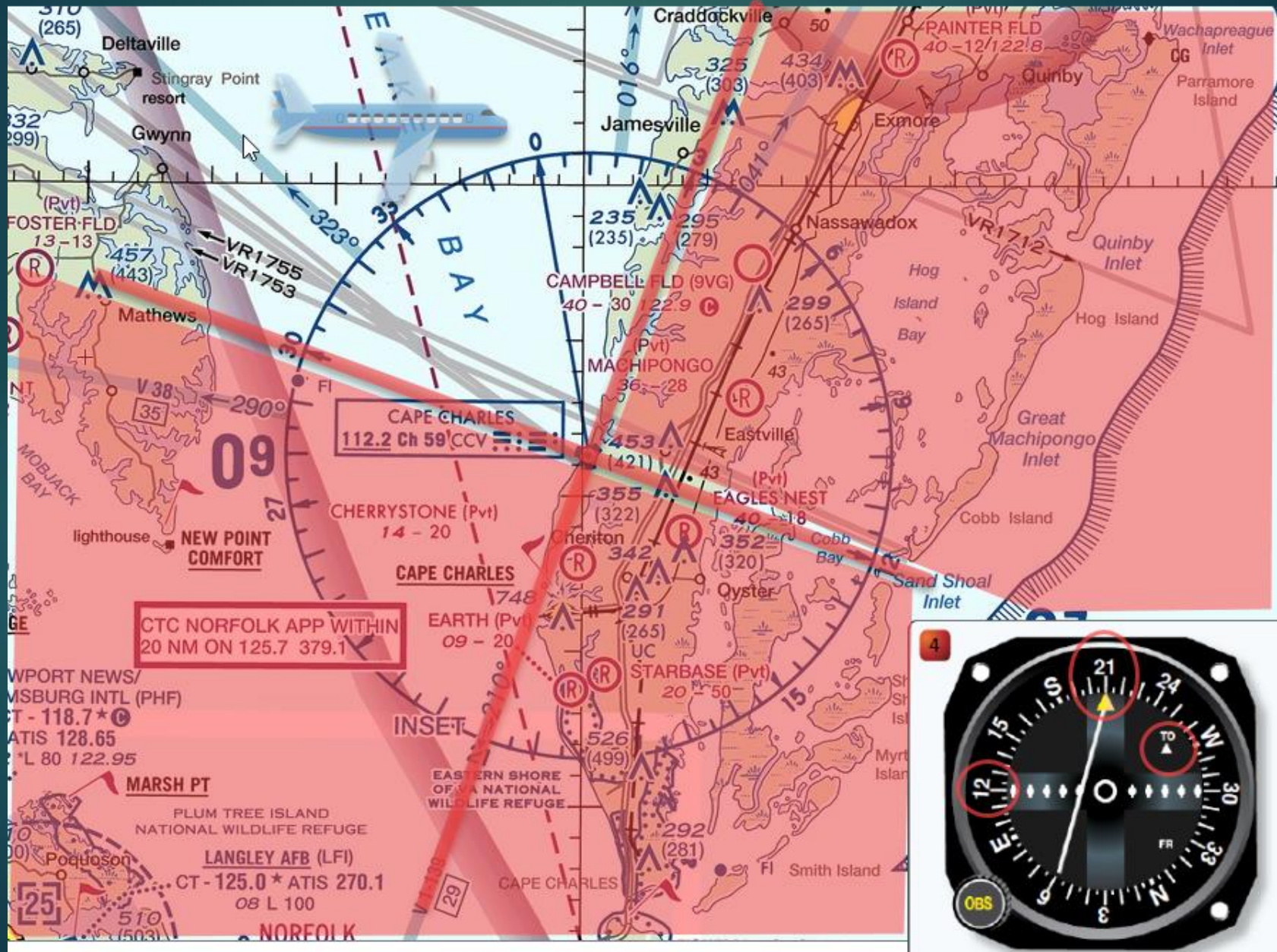
Your VOR receiver is tuned to the Cape Charles VOR (northeast of Norfolk, VA). Its display looks like Figure 28, #4. Where are you in relation to the station?



Your VOR receiver is tuned to the Cape Charles VOR (northeast of Norfolk, VA). Its display looks like Figure 28, #4. Where are you in relation to the station?



Your VOR receiver is tuned to the Cape Charles VOR (northeast of Norfolk, VA). Its display looks like Figure 28, #4. Where are you in relation to the station?



Your VOR is tuned to the Hopewell VOR (southeast of Richmond, VA). You are positioned over the golf course south of the town of Petersburg. Which VOR indicator from Figure 28 is correct?



Your VOR is tuned to the Hopewell VOR (southeast of Richmond, VA). You are positioned over the golf course south of the town of Petersburg. Which VOR indicator from Figure 28 is correct?



Your VOR is tuned to the Hopewell VOR (southeast of Richmond, VA). You are positioned over the golf course south of the town of Petersburg. Which VOR indicator from Figure 28 is correct?



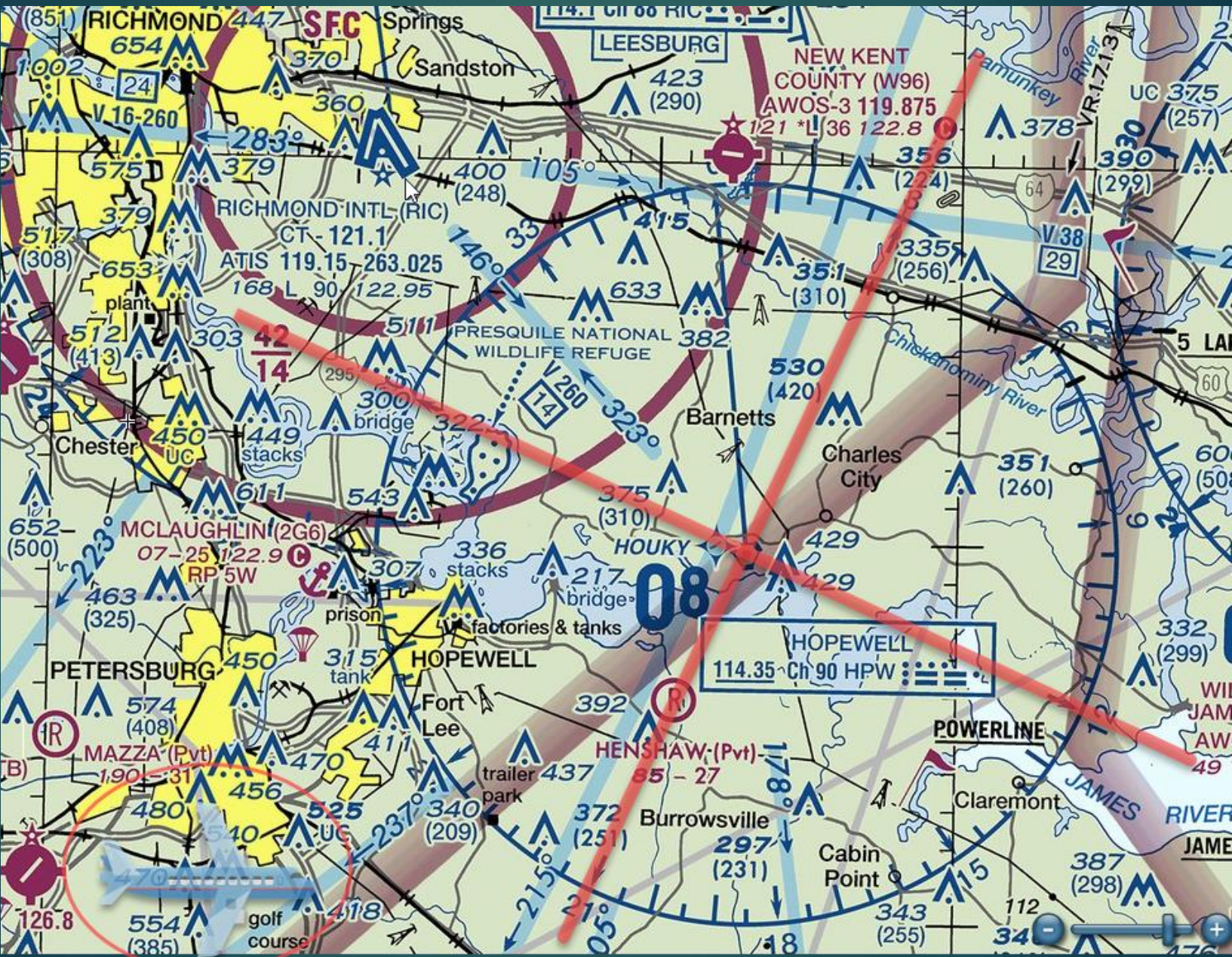
Your VOR is tuned to the Hopewell VOR (southeast of Richmond, VA). You are positioned over the golf course south of the town of Petersburg. Which VOR indicator from Figure 28 is correct?



Your VOR is tuned to the Hopewell VOR (southeast of Richmond, VA). You are positioned over the golf course south of the town of Petersburg. Which VOR indicator from Figure 28 is correct?



Your VOR is tuned to the Hopewell VOR (southeast of Richmond, VA). You are positioned over the golf course south of the town of Petersburg. Which VOR indicator from Figure 28 is correct?



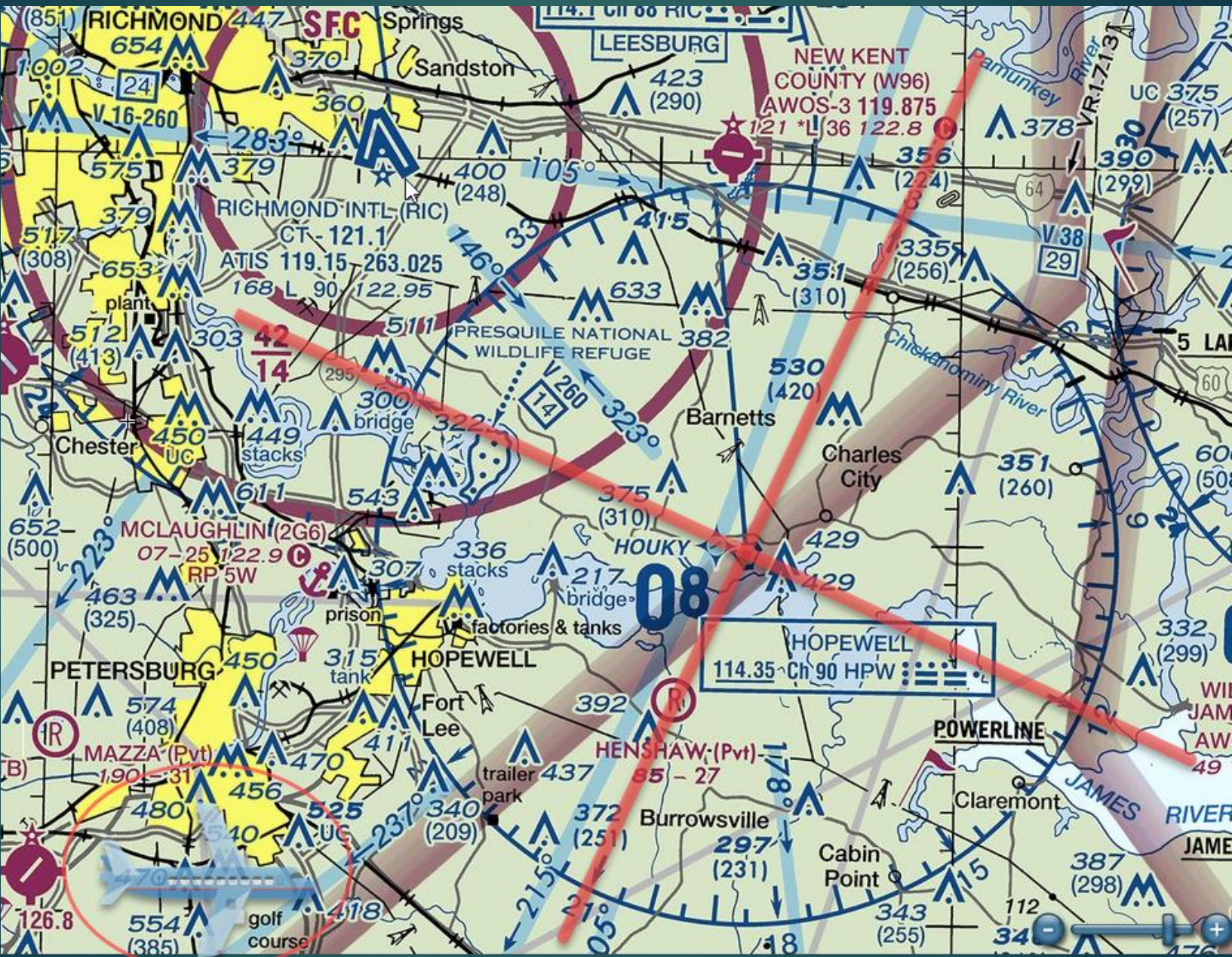
Your VOR is tuned to the Hopewell VOR (southeast of Richmond, VA). You are positioned over the golf course south of the town of Petersburg. Which VOR indicator from Figure 28 is correct?



Your VOR is tuned to the Hopewell VOR (southeast of Richmond, VA). You are positioned over the golf course south of the town of Petersburg. Which VOR indicator from Figure 28 is correct?



Your VOR is tuned to the Hopewell VOR (southeast of Richmond, VA). You are positioned over the golf course south of the town of Petersburg. Which VOR indicator from Figure 28 is correct?





You have two VOR receivers on board your aircraft. One is tuned to the Snow Hill VOR (southwest of Ocean City, MD) and has the needle centered TO 215°. The other is tuned to Salisbury VOR (co-located at SBY Airport) and has the needle centered FROM 108°. What town are you over?



You have two VOR receivers on board your aircraft. One is tuned to the Snow Hill VOR (southwest of Ocean City, MD) and has the needle centered TO 215°. The other is tuned to Salisbury VOR (co-located at SBY Airport) and has the needle centered FROM 108°. What town are you over?



You have two VOR receivers on board your aircraft. One is tuned to the Snow Hill VOR (southwest of Ocean City, MD) and has the needle centered TO 215°. The other is tuned to Salisbury VOR (co-located at SBY Airport) and has the needle centered FROM 108°. What town are you over?

Libertytown